

The background of the image is a blurred classroom scene. It shows rows of wooden desks and metal-framed chairs. In the foreground, the back of a black school backpack is visible, resting on a desk. The background is out of focus, showing other desks, chairs, and some colorful items on shelves. A semi-transparent dark blue rectangle is overlaid in the center of the image, containing the title text in white.

The Delaware Public Education Funding Commission



Welcome

Community Agreements

- Assume best intentions of speakers and participants; we are all here to make a positive change.
- Everyone's perspective is valued.
- Listen actively and avoid interrupting others.
- Keep comments and questions focused on the meeting's purpose and agenda.
- Please avoid side conversations or talking over others.
- Be concise and mindful of time.
- Allow space for everyone to contribute.
- Disagree respectfully.

State of Education in Delaware

DOE is committed to:

- **Providing a clear, coordinated roadmap for educational excellence.**
- **Aligning statewide efforts from early learning through postsecondary success.**
- **Ensuring accountability and transparency through measurable goals.**
- **Building a unified understanding of priorities across departments.**

State of Education in Delaware



Early Learning

- Every child healthy, safe, learning, and ready for kindergarten.
- Expand access to early childhood programs and supports.
- Grow and train excellent early educators.



Learning Environments

- Safe, caring, and inclusive schools.
- Empower teachers to grow and lead.
- Support strong, skilled school leaders.



Rigorous Standards

- Align standards, curriculum, and assessments.
- Strengthen accountability and student outcomes.
- Create seamless pathways to college, careers, and technical education.



Equitable Access

- Advance AI and digital literacy for all.
- Direct resources to students who need them most.
- Ensure consistent, coherent policy implementation.



Engaged Community

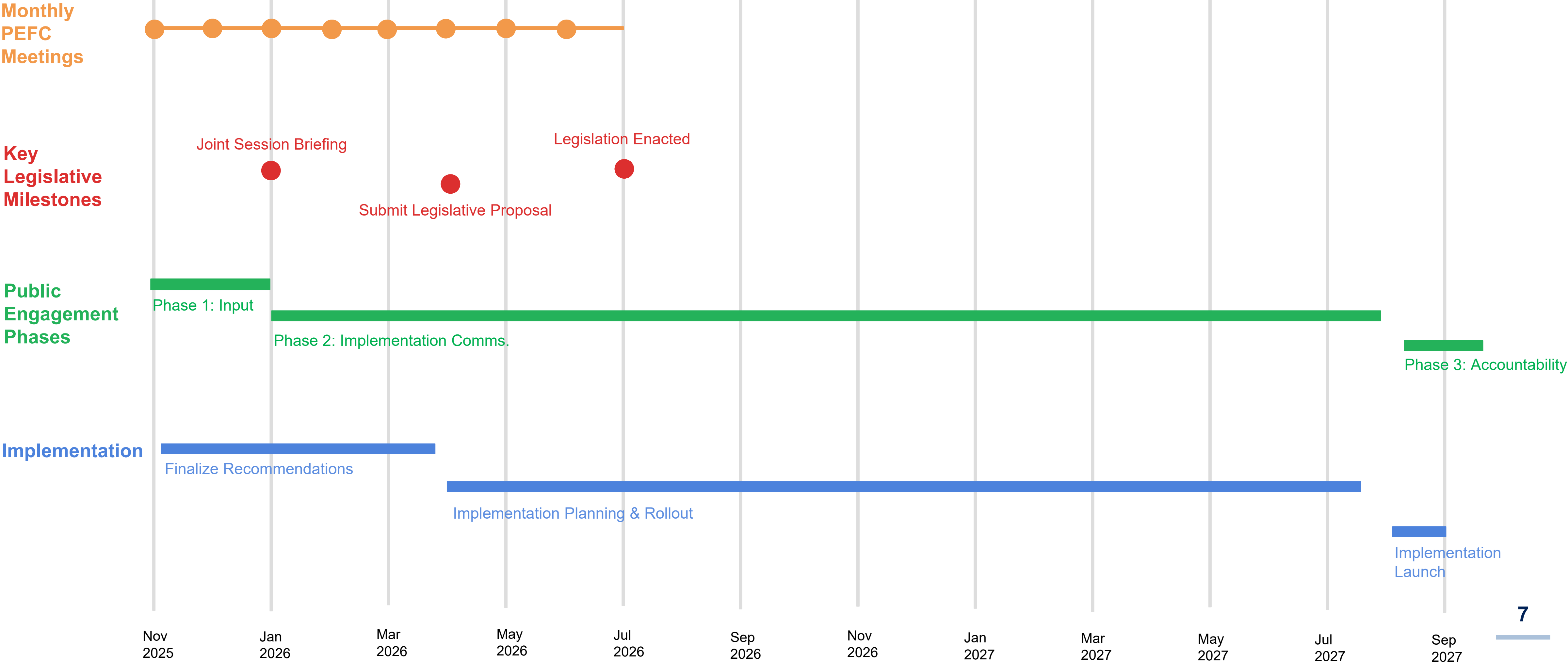
- Partner with families through trust and communication.
- Build broad community advocacy for education.

Background and Context

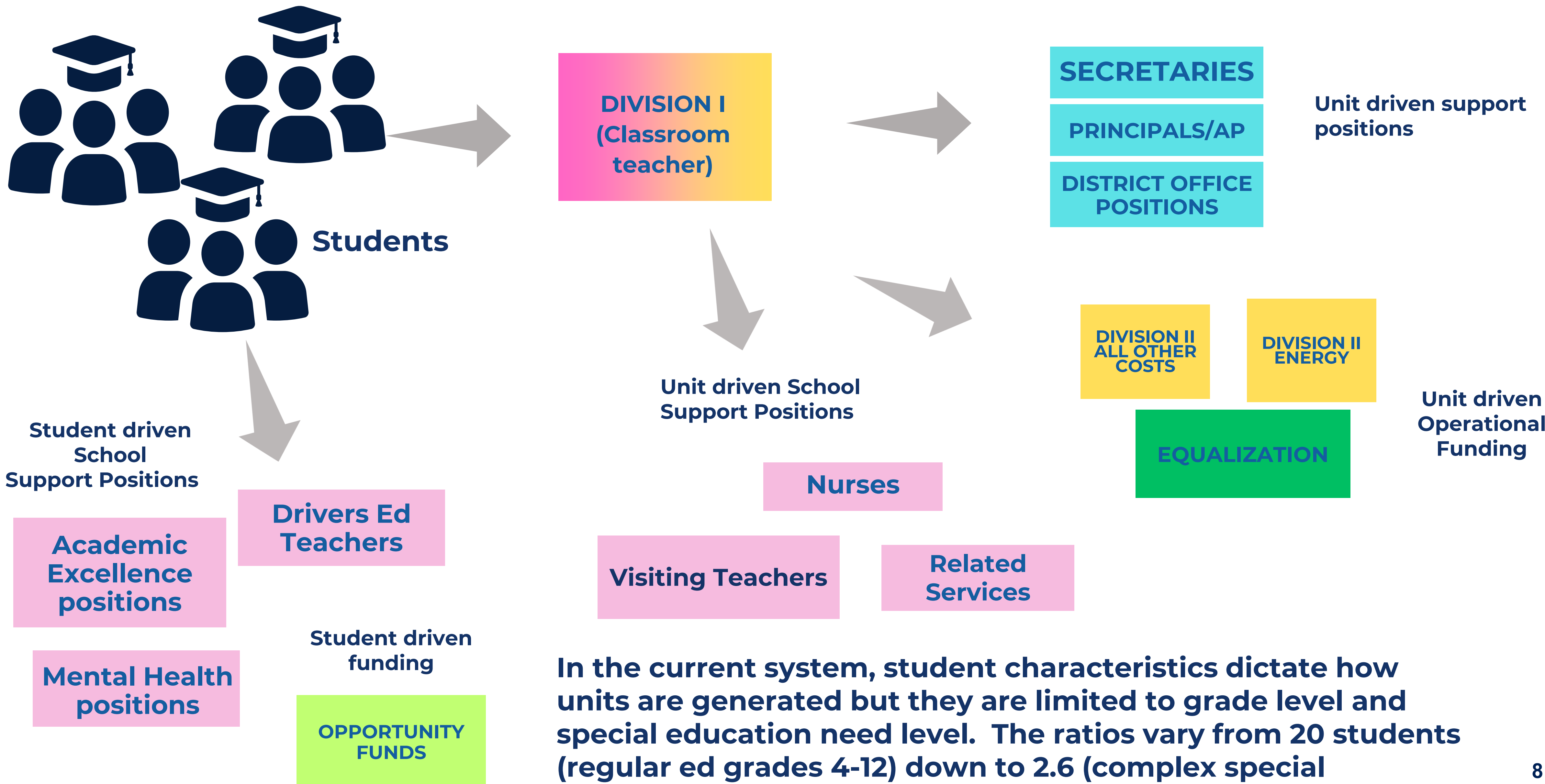
Senator Laura Sturgeon, PEFC Chair



Timeline — Nov 2025 to Sep 2027

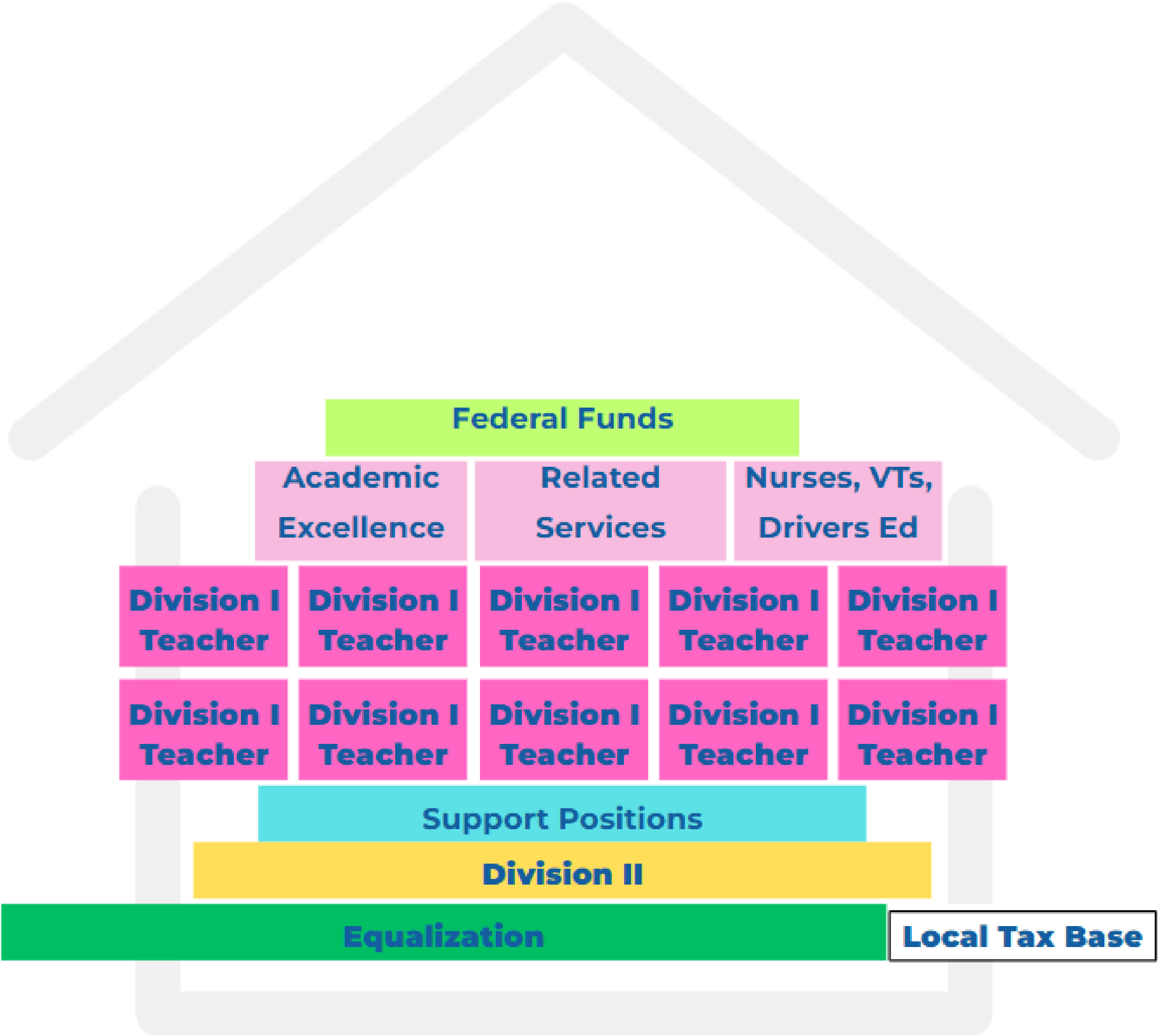


Students are the building blocks of our current system

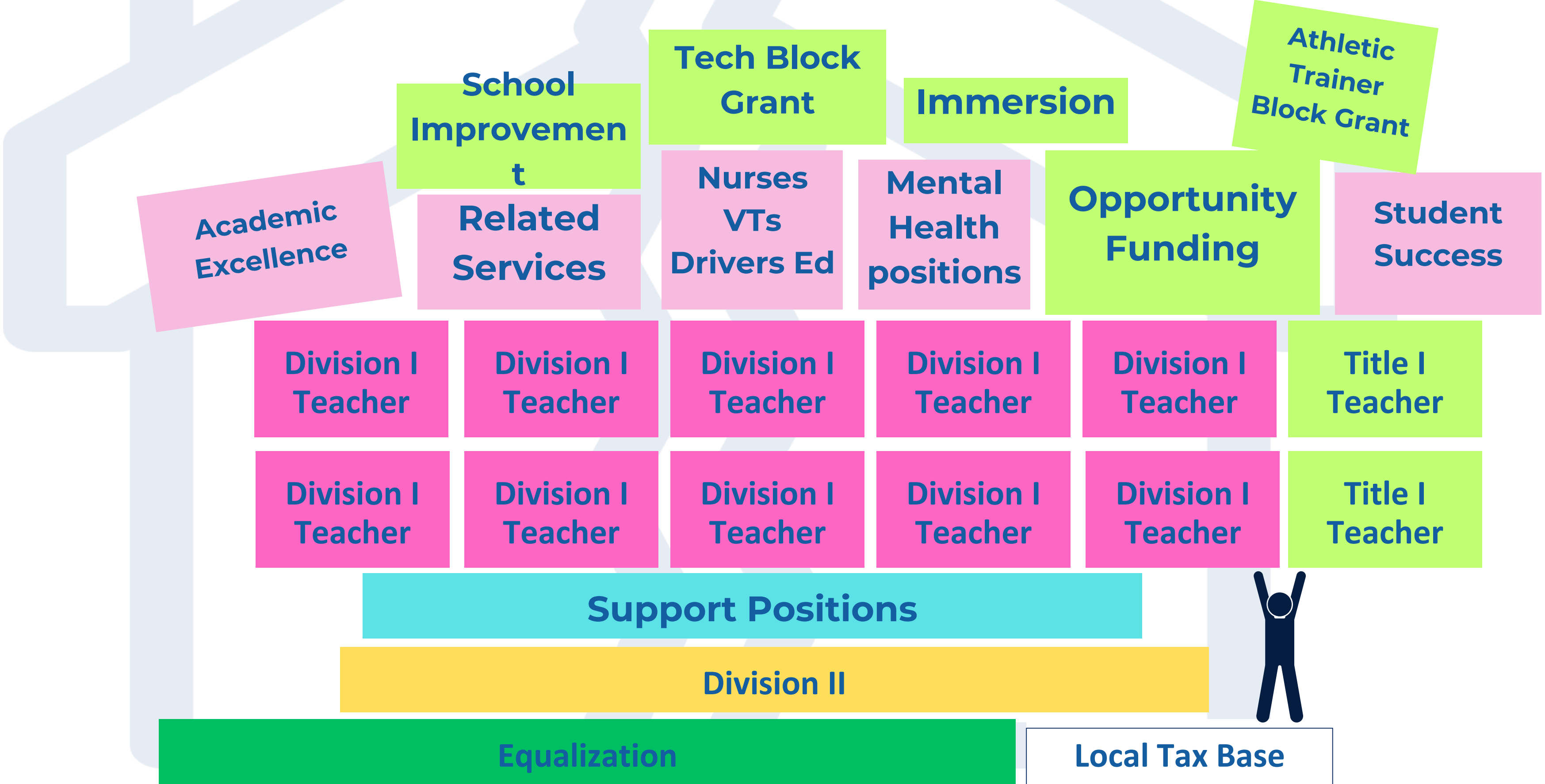


In the current system, student characteristics dictate how units are generated but they are limited to grade level and special education need level. The ratios vary from 20 students (regular ed grades 4-12) down to 2.6 (complex special education PK-12).

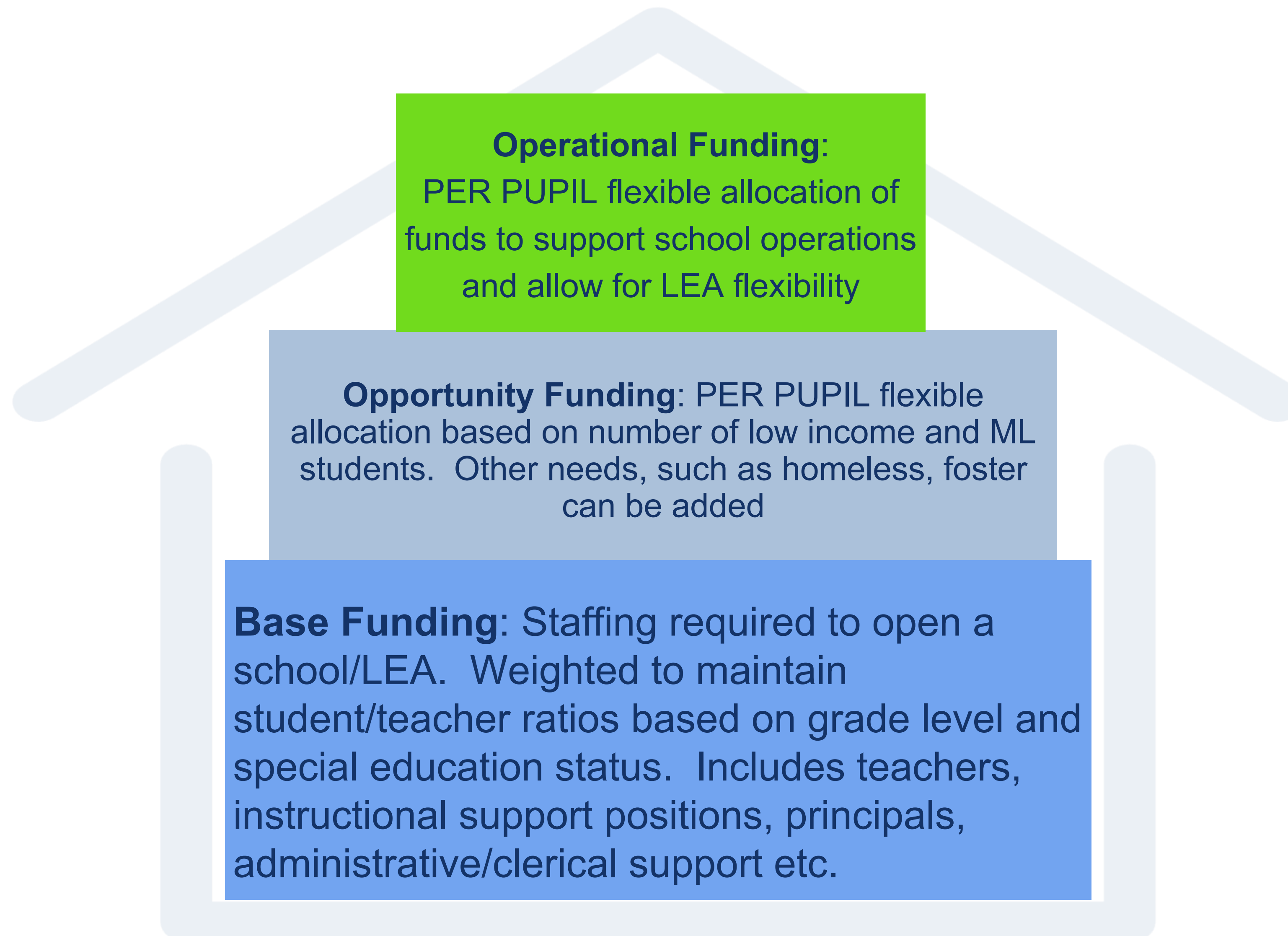
Current funding system as designed: This is how the current unit count system was intended to work.



Over time, investments have been made in certain areas but have not kept pace with changing student needs and base funding has been stagnant. This has created tremendous stress on the system.



Proposed PEFC Funding Model (State Funds Only)



Questions/Comments

A blue-tinted background image showing a group of people in a meeting or classroom setting. A woman with glasses and a scarf is in the center, looking forward. To her left, a man is looking towards her. In the foreground, the back of a person's head is visible, looking towards the center. The overall atmosphere is professional and collaborative.

Guiding Questions

What questions or clarifications do you have?

What do you like about these proposed changes?

What concerns or uncertainties do you have?

How will you know this effort has made a positive difference?

Share Additional Feedback



Adjourn