

# Tuesday

---

# PA Games



ay

a\_e

# Vowel Teams

ai

# Learning Targets

1. I CAN read words with closed syllables.
  1. I CAN read and spell words with Long O Spelling Patterns.
  1. I CAN review last week's PM.
-

Get up to 5 Ujima Points a day!!

## Classroom Norms

Sit in SLANT



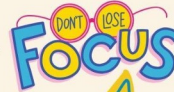
Raise your hand to speak.



One Mic



Focus on the Learning Target.

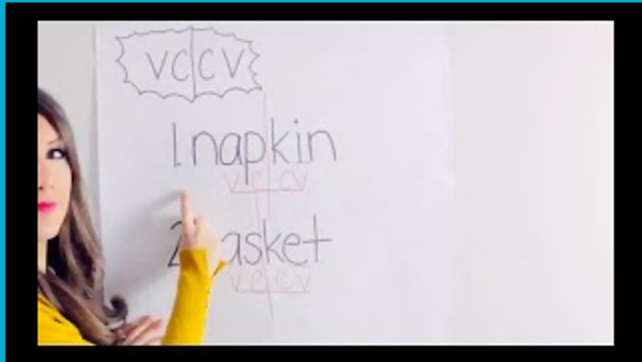


Give your best effort.



Star effort

I Can read words  
with  
closed syllables.



Mistake

Embrace

Always

Escape

painful

# Learning Target:

I CAN read and  
spell words with  
Long O.



# Learning Target:

I CAN read and spell words with Long O.

## Spelling Patterns Long O

o

At the end of a syllable

robot



o\_e

Magic E

bone



oa

Vowel Team

coat



ow

Vowel Team

snow



oe

The Rare way

toe





## Learning Target:

I CAN read and  
spell words with  
Long O.

---

# Learning Target:

I CAN read and  
spell words with  
Long O.



# Learning Target:

I CAN review my  
PM.



ay

a\_e

o\_e

# Vowel Teams

ai

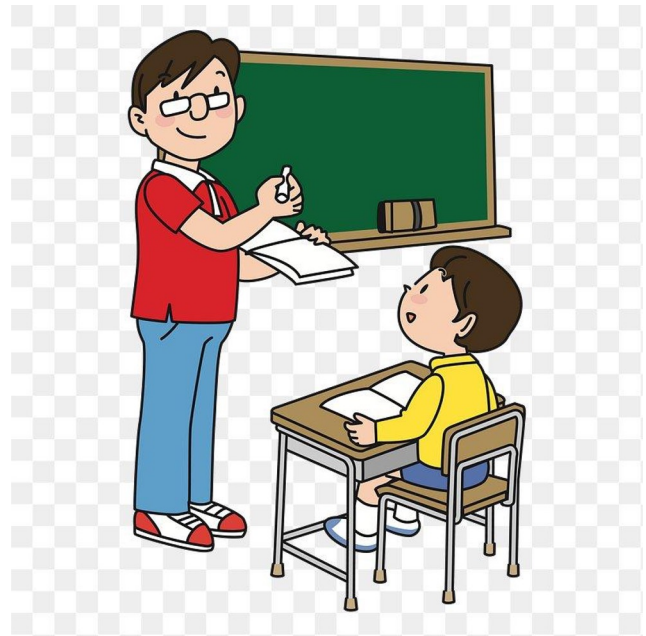
oa

ow

# Wednesday

---

# PA Games



ay

a\_e

o\_e

# Vowel Teams

ai

oa

ow

# Learning Targets

1. I CAN read words with closed syllables.

1. I CAN read and spell words with Long O Spelling Patterns.

1. I CAN read fluently with PEAR.

---



Get up to 5 Ujima Points a day!!

## Classroom Norms

Sit in SLANT



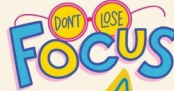
Raise your hand to speak.



One Mic



Focus on the Learning Target.

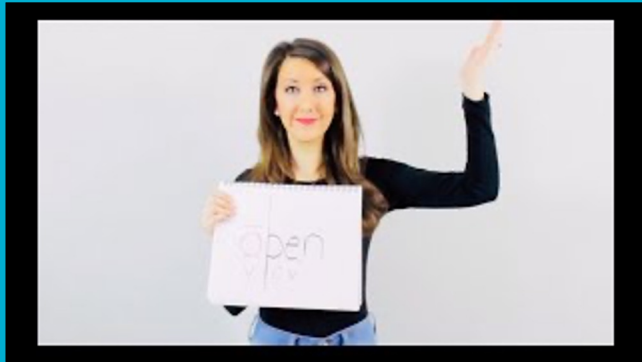


Give your best effort.



Star  
effort

I Can read words  
with  
closed syllables.



refrain

locate

below

ozone

propose

# Learning Target:

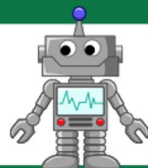
I CAN read and spell words with Long O.

## Spelling Patterns Long O

o

At the end of a syllable

robot



o\_e

Magic E

bone



oa

Vowel Team

coat



ow

Vowel Team

snow



oe

The Rare way

toe



# I Can read fluently using PEAR.



FLUENCY means Reading with proper:

**P** → Pausing/Phrasing

pausing at punctuation, chunked phrases to sound **smooth**.

**E** → Expression

change your voice appropriately at punctuation marks; **expressive**.

**A** → Accuracy

read words correctly and **accurately**.

**R** → Rate

read at the just right **rate(speed)**, not too fast, not too slow.



# Learning Target:

I CAN explain  
and use our  
spelling  
routine.



ay

a\_e

o\_e

# Vowel Teams

ai

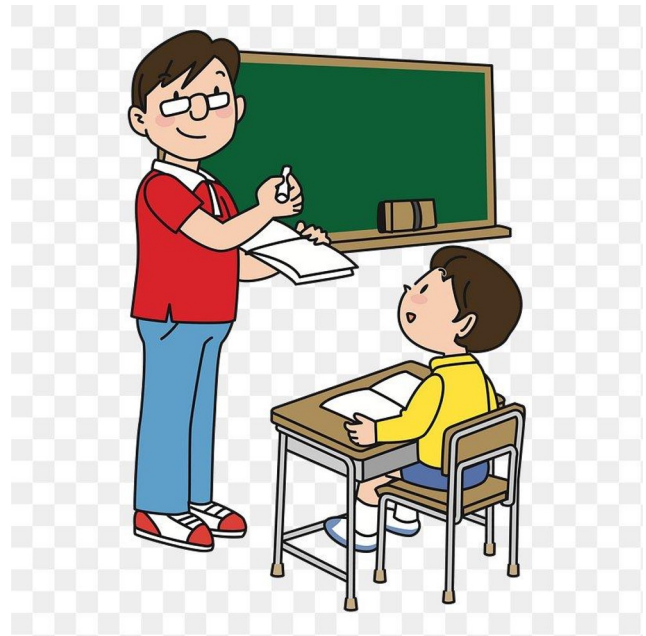
oa

ow

# Thursday

---

# PA Games





ay

a\_e

o\_e

# Vowel Teams

ai

oa

ow

# Learning Targets

1. I CAN read words with closed syllables.

1. I CAN read and spell words with Long O Spelling Patterns.

1. I CAN use Ujima to play learning games with my classmates

~~1.~~ I CAN read fluently with PEAR.

Get up to 5 Ujima Points a day!!

## Classroom Norms

Sit in SLANT



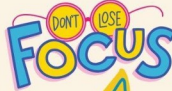
Raise your hand to speak.



One Mic



Focus on the Learning Target.



Give your best effort.



Star  
effort

# Decoding Teams

1. Line up in 2 teams
2. Must read word within 5 seconds
3. Must sound out in your head

## Spelling Patterns Long O

o

At the end of a  
syllable

robot



o\_e

Magic E

bone



oa

Vowel Team

coat



ow

Vowel Team

snow



oe

The Rare way

toe



# Spelling Teams

1. Must use the strategies
2. Each person writes one letter
3. Check work as a team



# I Can read fluently using PEAR.



FLUENCY means Reading with proper:

**P** → Pausing/Phrasing

pausing at punctuation, chunked phrases to sound **smooth**.

**E** → Expression

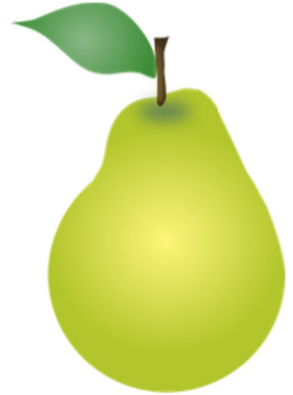
change your voice appropriately at punctuation marks; **expressive**.

**A** → Accuracy

read words correctly and **accurately**.

**R** → Rate

read at the just right **rate(speed)**, not too fast, not too slow.



ay

a\_e

o\_e

# Vowel Teams

ai

oa

ow