

Data Dialogue Day

9/29/2023





DO NOW

Data Survey

Learning Targets

- In the spirit of Kujichagulia, I can learn our Work Plan norms which will help us meet this year's targets in. Character, MKS and HQW
- I can use Nia to review school data and plan for an effective MTSS Cycle 1.





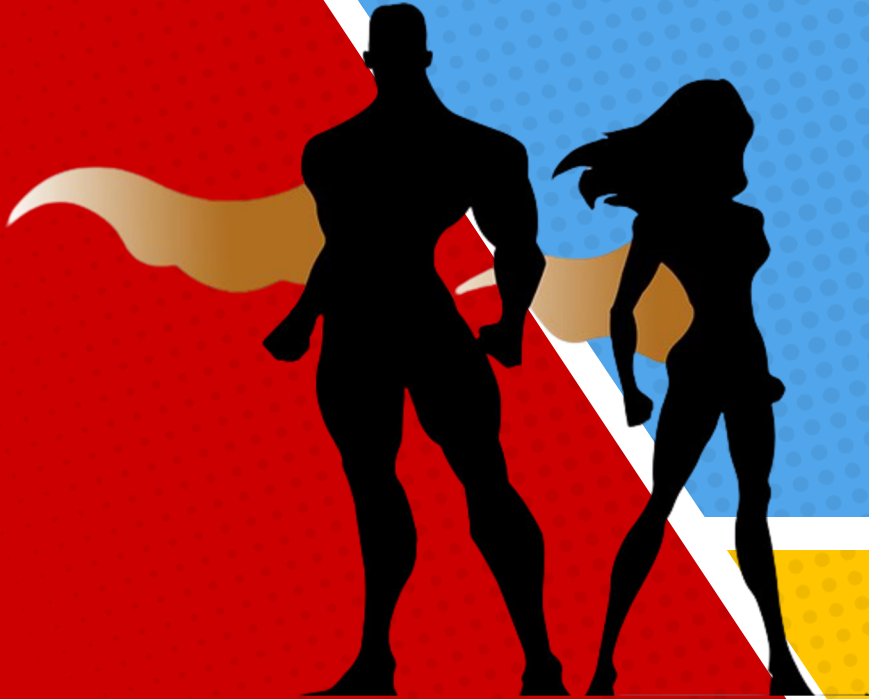
Agenda

- **Work Plan Norms and Data Wall** (Principal Johnson)
- **What is MTSS? What are MTSS Tiers?** (SPED Directors)
- **MTSS Hubs/Resources** (Ms. Peterson/Mr. Sink)
- **MTSS Best Practices** (Ms. Borish/Ms. Goldsberry)
- **Action Items** (Principal Johnson)

Work Plan Norms

“We will...” Statements

CREDITS: This presentation template was created by
Slidesgo, including icons by **Flaticon** and
infographics & images by **Freepik**







Character

We will incorporate the **Nguzo Saba Principles** in our communication and have students practice and reflect on them daily.



MKS

Checks for Understanding

- We will use **Kuumba** to assess student learning by prioritizing arts integration across all content areas.
 - We will use **Imani** to follow through with our daily mission and vision.
 - We will use our **Kujichagulia** and knowledge of student understanding and misunderstanding to drive instruction in real time and teach our students to be data-literate.
 - We will use **Umoja** to unpack learning targets multiple times throughout the lesson.
 - We will empower students to use **Nia** to contribute their ideas to daily instruction and culminating events.
- 
- 

High Quality Work

Criteria for Success

- We will use **Kujichagulia** to create exemplars, models, and rubrics to promote student success.
- We will embody **Ujima** using a variety of conferences, peer critique, and self-reflection to empower students to achieve their highest quality of work.
- We will use **Kuumba** and authenticity in student learning through the use of experts, fieldwork, experiences, and research to promote **Ujamaa** through real-world connections.
- We will track our progress toward high quality work through the use of portfolio, student-led conferences, doc panels, and data walls to encourage the **Nia** for scholars to be leaders of their own learning.

Data Wall



[Data Wall 2022-2023](#)
[Data Wall 2023-2024](#)

RIT - Rausch Unit: Measures where students are ready to learn as they are answering questions correctly 50% of the time.

Log into MAP
Go to Growth Reports
Go to Class Report

Exit
Ticket

Complete and share with
Ms. Johnson

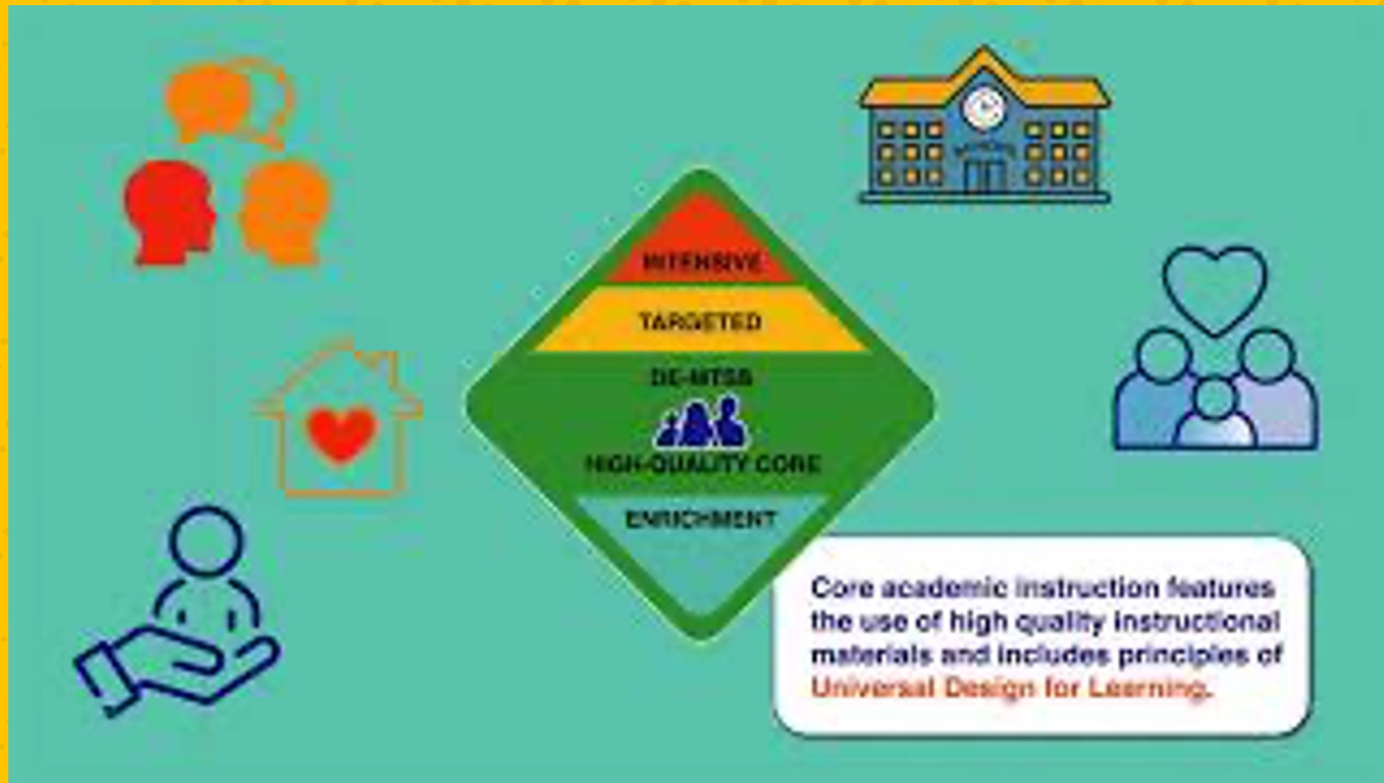
What is MTSS?

Multi-Tiered Support Systems

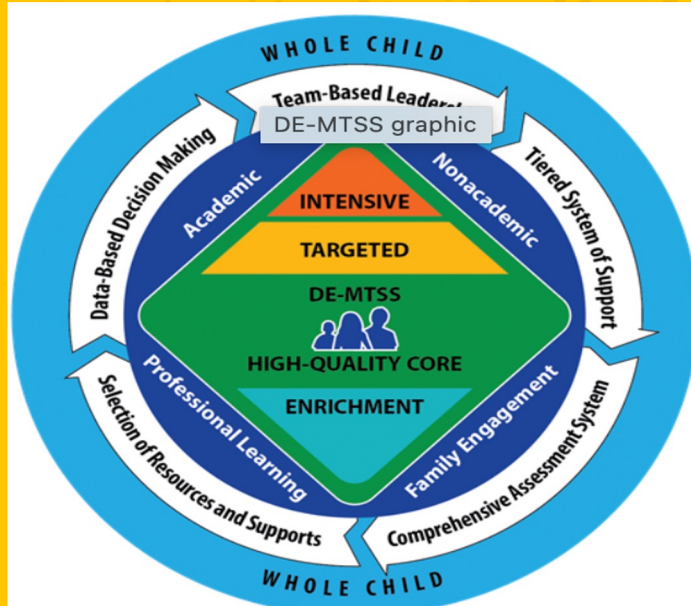
DE-MTSS Vision

DE-MTSS provides a whole-child framework for all students to reach their full potential in a positive, inclusive, and equitable learning environment. Through high-quality instruction and intervention—and a culture of collaboration, communication, and flexibility—parents, educators, and leaders work together to develop a responsive system of support that addresses the academic and nonacademic needs of all learners and boosts student performance

What is MTSS?



What is MTSS?



DE-MTSS includes the following five essential components:

- [Data-based decision making](#) – Uses data to make decisions about academic and non-academic supports delivered to every student.
- [Team-based leadership](#) – Includes educators, families and community members who share in the decision-making process for all students.
- [A tiered system of support](#) – Provides layers of support to address student needs.
- [Comprehensive assessment system](#) – Uses various types of assessments to help educators and families make informed decisions about each child's strengths and needs.
- [Selection of academic and non-academic resources, support and intervention](#) – Establishes a process that makes certain all students receive resources and support that are evidence-based and align with existing programs and initiatives.

MTSS in the Classroom ?

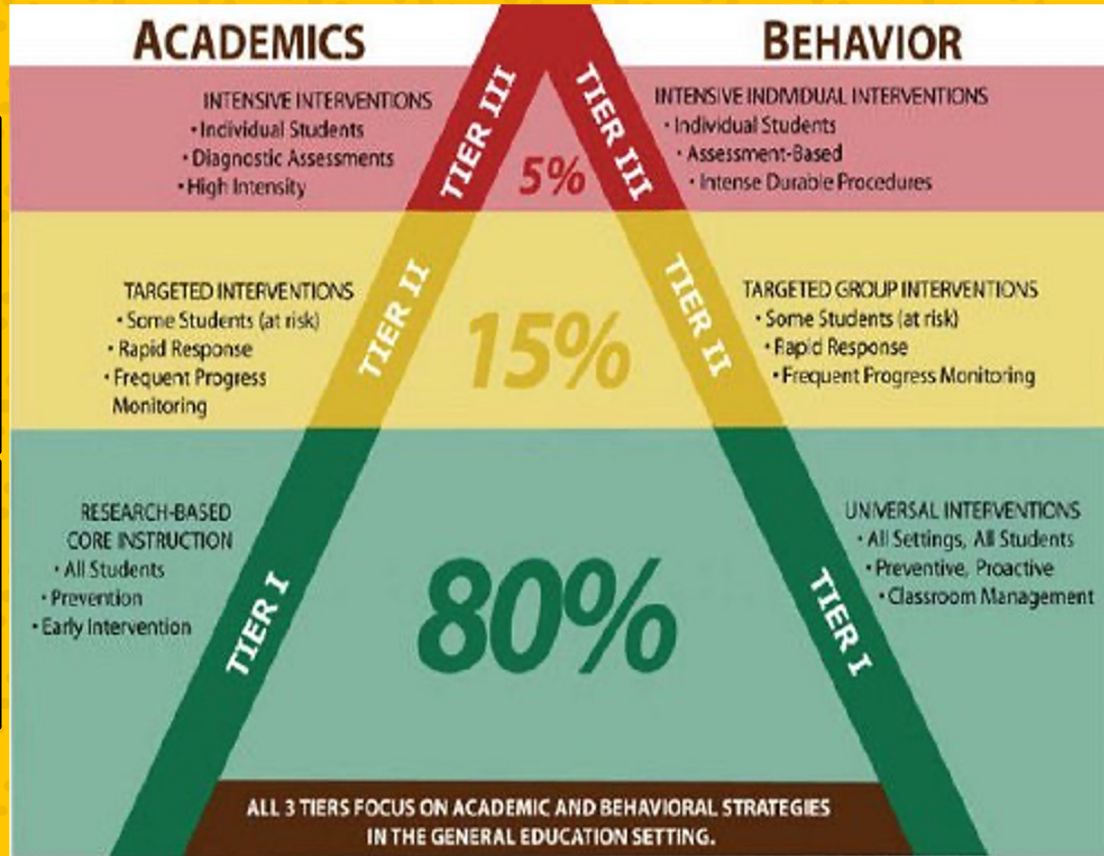
MTSS stands for multi-tiered system of support. As the name implies, this framework has a tiered infrastructure that uses data to help match academic and social-emotional behavior assessment and instructional resources to each student's needs.

Jan 16, 2020

What are MTSS Tiers?

Only if identified by SST -
Orange in class list;
prioritized for
interventionist in K-5
reading; 150 minutes per
week of intervention &
progress monitor weekly

90 minutes per week of
intervention (120 total
if both subjects) & **at
least bi-weekly
progress monitoring**



What is MTSS? What are MTSS Tiers?

- 25th%tile & below → Tier 3: 90 minutes a week or 120 minutes a week for both subjects
- at least bi-weekly progress monitoring
- 26th% - 49th%tile → Tier 2 @ risk: No minutes requirement, 26th- 39th percentile should be prioritized for MTSS minutes, 40-49th whenever possible
- 50th - 79th%tile → Tier 1 Meeting
- 80%tile and above → Tier 1 Exceeding

MTSS Hubs and Resources

I. **MTSS Plans** = 1st/2nd Slide...Shared Grade Team Slide, you can print or make copies if needed

→ 1. MTSS **Lesson Plans** by Phases (K-2).... 3-8th (MTSS plans)

→ 2. Reading **Center Activities** (K-2). 3-5 grade use EL All Block in EL book

→ 3. Maybe the **Schoolwide Data Wall**

II. **MTSS Data Trackers(Rdg/Math)** = Individual Slides you have Editing Access

→ 1. **Reading/Math Trackers** by Cycle = (Track Data such as: Attendance and Progress Monitoring)
Legal Tracker that MUST be completed Daily.

→ 2. **Benchmark Skills Tracker K-4** = (Tracks Reading Skills Data, this goes on our Schoolwide Data Wall, informs our groups)

The background is a vibrant red sunburst pattern with rays radiating from the center. Scattered throughout are several stars: three white stars with black outlines and one yellow star with a black outline.

Explore your Hub

→ [MTSS HUBS](#)
[2023-2024](#)

MTSS Best Practices

Before MTSS:

- ★ Plan and prepare.
- ★ Be intentional with groupings.

During MTSS:

- ★ Create and post learning targets and Nguzo Saba norms for MTSS.
- ★ Take attendance daily.
- ★ Monitor your students while working.
 - Ex: Moby Real Time

After MTSS:

- ★ Debrief learning targets and Nguzo Saba norms.
- ★ Assess student work and enter progress monitor data, when relevant (at least once every 2 weeks).

If this was your class, what could you do?

Reading Ideas:

Math Ideas:

These students need 90 minutes per week with the teacher.	3rd
	3rd
	4th
	8th
	10th
	12th
	12th
	15th
	20th
	20th
These students should also be seen as often as possible as well.	21st
	23rd
	27th
	29th
	29th
These students need enrichment but can work mostly independently.	31st
	33rd
	54th
	62nd
	64th
	64th
66th	
68th	

What can I use for MTSS?

ELA

- ★ **K-2:** Pre-Written Center Activities in your Hub; PreMade Activity Bins and Center Binders in your classroom
- ★ **3-5:** ALL Block Materials (paper manuals and available online through EL website and/or Imagine Learning)
- ★ **All Grades:**
 - Pre-written lesson plans in your hub
 - MobyMax Language, Reading Literature, and Reading Informational
 - NewsELA
 - SBAC Tools for Teachers
 - Reteaching and revising Standards-aligned supplementary materials

Math (All Grades)

- ★ Pre-written lesson plans in your hub
- ★ MobyMax
- ★ Zearn
- ★ SBAC Tools for Teachers
- ★ Standards-aligned supplementary materials
- ★ Reteaching and revising
- ★ Flocabulary

Tasks/Next Steps



PDMS

**Goal Setting
Conferences prep**

Exit Ticket

