



2018-2019 Delaware Dropout Summary



Report Prepared by:

Delaware Department of Education
401 Federal Street, Suite 2
Dover, Delaware 19901

Officers of the Department of Education

Susan Bunting, Secretary of Education
Christine Alois, Deputy Secretary
Emily Cunningham Chief of Staff
Monica Gant, Academic Support
Kim Klein, Operations Support
Jon Neubauer, Educator Support
Michael Rodriguez, Student Support
Yvette Sanchez Fuentes, Early Childhood Support
James Simmons, Office of Equity and Innovation

The Department of Education is an equal opportunity employer. It does not discriminate on the basis of race, color, religion, national origin, sex, sexual orientation, gender identity, marital status, disability, age, genetic information, or veteran's status in employment or its programs and activities. Inquiries should be directed to the Department's Human Resource Officer, 401 Federal Street, Suite 2, Dover, Delaware 19901. Telephone Number: (302) 735-4030.

Ensuring Confidentiality of Individual Student Data

The Delaware Department of Education is legally required to protect the confidentiality of data that could be used to identify individual students. Legal requirements for protecting the data are detailed in the Family Education Rights and Privacy Act (FERPA) (20 U.S.C. § 1232G; 34 CFR Part 99). FERPA requires that these data be protected to ensure they cannot be used to identify the attributes of any individual student. Beyond the natural barriers to precise identification, including differential time frames and net transfer effects, additional disclosure mitigation methods have been applied to these data to ensure confidentiality.

Executive Summary

The Delaware Department of Education (DDOE) report on dropouts is from data collected annually. Delaware collects data from all public schools including grades 7 through 12, but calculates the yearly dropout rate from grades 9 through 12, as is prescribed by the National Center for Educational Statistics (NCES), which provides data to the federal reporting system.

In accordance with NCES requirements, Delaware uses the *event dropout rate*, which measures the proportion of students who drop out in a single school year. This is the rate the State has reported since 1994. See Appendix A for additional details about the dropout calculation.

This report does not contain data reflecting private, parochial, or home school students in Delaware. The State does gather information from families that home school their children as well as from private schools, but only does so to verify the transfer of a student from public to private and home schools.

Highlights

- Last year, out of 41,965 students enrolled in grades 9-12, 559 students left school.
- The statewide annual dropout rate for school year 2018-2019 was 1.3%. This is a decrease from school year 2017-2018 when the dropout rate was 1.7%.
- Of the 559 dropouts, 63.7% were male and 36.3% were female.
- The largest number of dropouts were from students enrolled in the 9th grade (184 students). Students enrolled in 12th grade represented the lowest proportion of students who dropped out (79 students).
- Academic, personal and economic reasons were cited by students as the reasons they dropped out.

Table 1
Dropout Summary Statistics
Dropout Rates of 9-12 Grade Students, 2016-2019

	2016-2017			2017-2018			2018-2019		
	Total Students	Dropout Students	Dropout Rate	Total Students	Dropout Students	Dropout Rate	Total Students	Dropout Students	Dropout Rate
<u>State Average</u>	40,884	700	1.7%	41,593	699	1.7%	41,965	559	1.3%
<u>Gender</u>									
Female	19,907	282	1.4%	20,288	267	1.3%	20,546	203	1.0%
Male	20,977	418	2.0%	21,305	432	2.0%	21,419	356	1.7%
<u>Race/Ethnicity</u>									
African American	12,909	281	2.2%	13,138	258	2.0%	13,208	205	1.6%
Asian American	*	*	0.3%	*	*	0.5%	*	*	0.4%
Hispanic or Latino	5,968	161	2.7%	6,468	159	2.5%	6,832	152	2.2%
Multi-Racial	*	*	1.5%	*	*	1.2%	*	*	1.0%
Native American	*	*	2.4%	*	*	4.2%	*	*	1.3%
Native Hawaiian/Pacific Islander	*	*	2.0%	*	*	2.0%	49	0	0.0%
White	19,313	234	1.2%	19,156	253	1.3%	18,949	183	1.0%
<u>Age</u>									
Less than 15	*	*	0.1%	*	*	0.0%	*	*	0.0%
Age 15	*	*	0.2%	*	*	0.5%	*	*	0.1%
Age 16	10,198	129	1.3%	10,140	142	1.4%	10,206	17	0.2%
Age 17 and over	12,601	550	4.4%	12,709	502	3.9%	26,358	541	2.1%

*Note: *Information suppressed to protect student privacy.*

Figure 1
Delaware Dropout Summary Statistics, 2009-2019

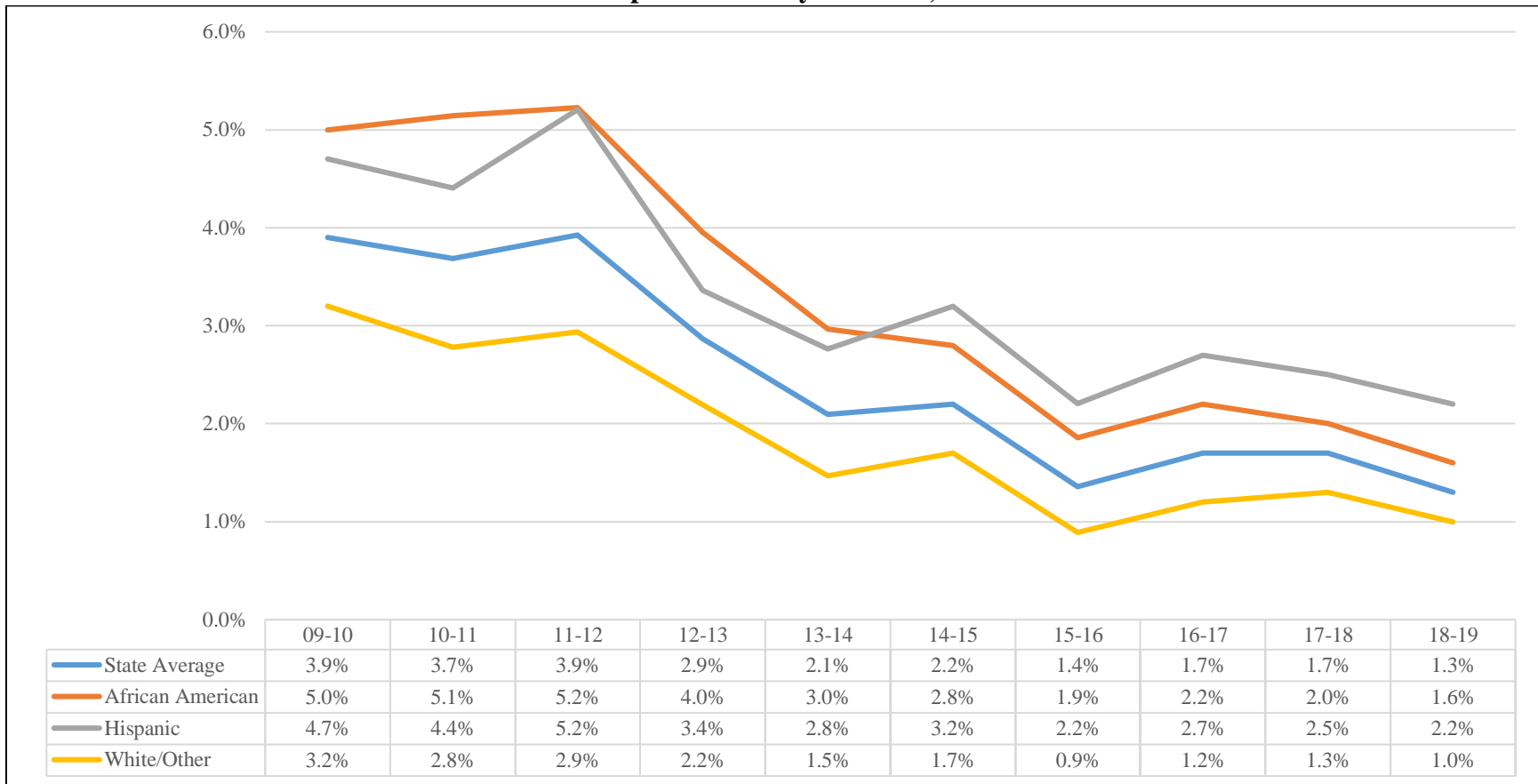


Table 2
Dropouts by Race and Grade, 2018-2019

Grade	African American			Hispanic or Latino			White/Other			All		
	Total Students	Dropout Students	Dropout Rate	Total Students	Dropout Students	Dropout Rate	Total Students	Dropout Students	Dropout Rate	Total Students	Dropout Students	Dropout Rate
9	3,984	60	1.5%	2,051	67	3.3%	5,986	57	1.0%	12,021	184	1.5%
10	3,284	57	1.7%	1,847	44	2.4%	5,605	55	1.0%	10,736	156	1.5%
11	3,004	57	1.9%	1,568	27	1.7%	5,216	56	1.1%	9,788	140	1.4%
12	2,936	31	1.1%	1,366	14	1.0%	5,118	34	0.7%	9,420	79	0.8%
Total	13,208	205	1.6%	6,832	152	2.2%	21,925	202	0.9%	41,965	559	1.3%

Figure 2
Number of Dropouts by Race and Grade, 2018-2019

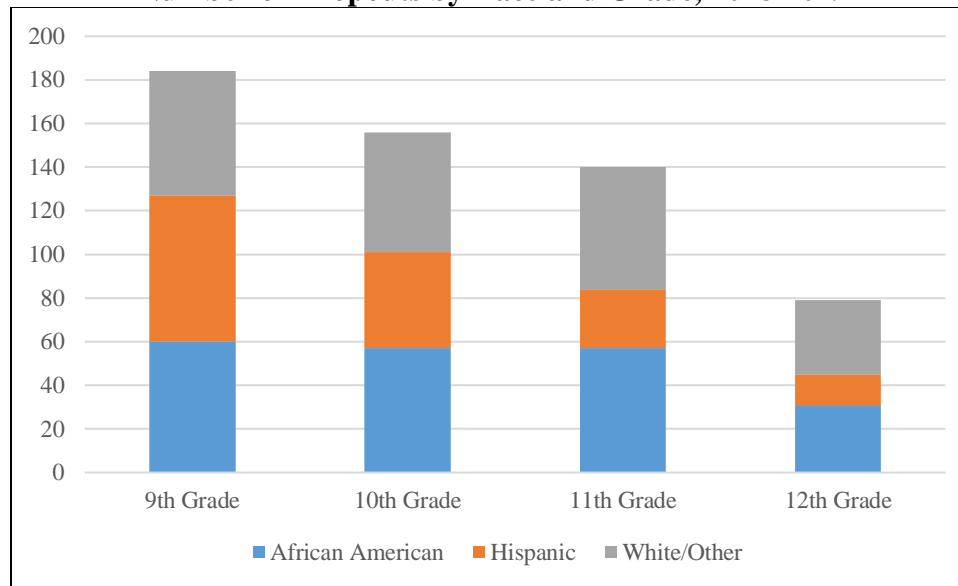


Table 3
Dropouts by Race and Gender, 2018-2019

Gender	African American			Hispanic or Latino			White/Other			All		
	Total Students	Dropout Students	Dropout Rate	Total Students	Dropout Students	Dropout Rate	Total Students	Dropout Students	Dropout Rate	Total Students	Dropout Students	Dropout Rate
Male	6,552	71	1.1%	3,329	54	1.6%	10,665	78	0.7%	20,546	203	1.0%
Female	6,656	134	2.0%	3,503	98	2.8%	11,260	124	1.1%	21,419	356	1.7%
Total	13,208	205	1.6%	6,832	152	2.2%	21,925	202	0.9%	41,965	559	1.3%

Figure 3
Number of Dropouts by Race and Gender, 2018-2019

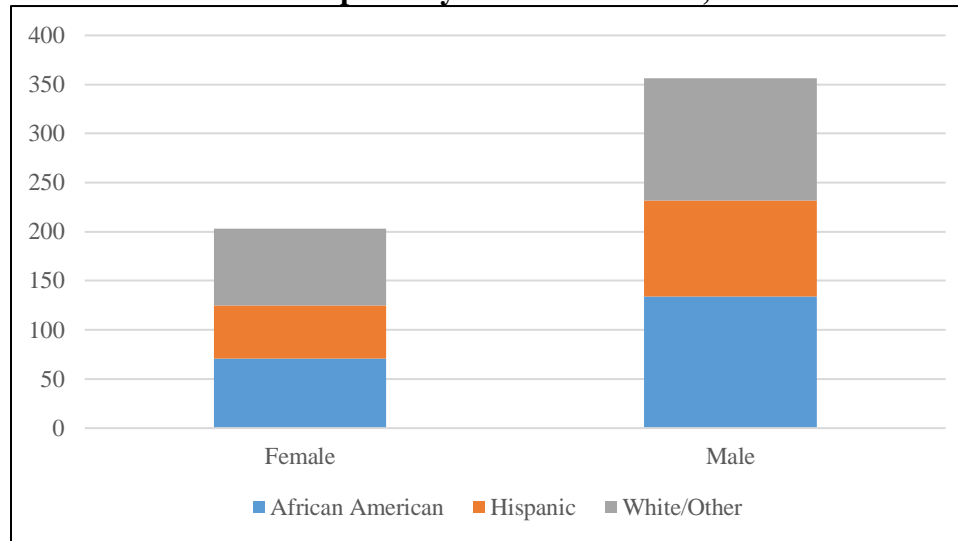
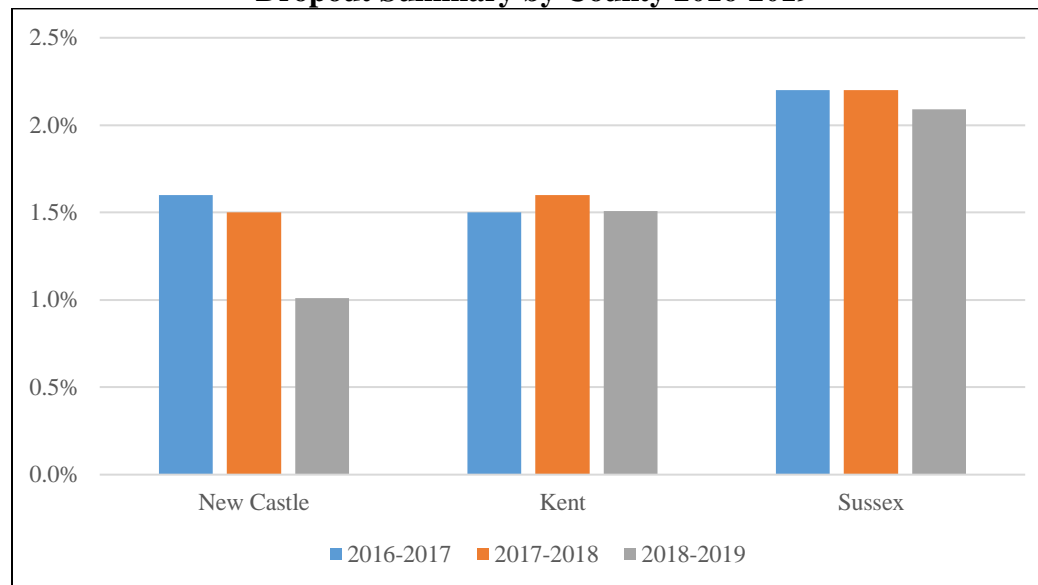


Table 4
Dropout Summary by County, 2016-2019

County	2016-2017 Dropout Rate	2017-2018 Dropout Rate	2018-2019 Dropout Rate
New Castle	1.6%	1.5%	1.0%
Kent	1.5%	1.6%	1.5%
Sussex	2.2%	2.2%	2.1%

Figure 4
Dropout Summary by County 2016-2019



**Table 5
Reasons for Dropping Out, 2018-2019**

Reason	Number	Percent
School-Related	42	7.5%
Economic-Related	50	8.9%
Personal	12	2.1%
School/District Did Not Report Data	455	45.6%
Total	559	100%

**Figure 5
Reasons for Dropping Out, 2018-2019**

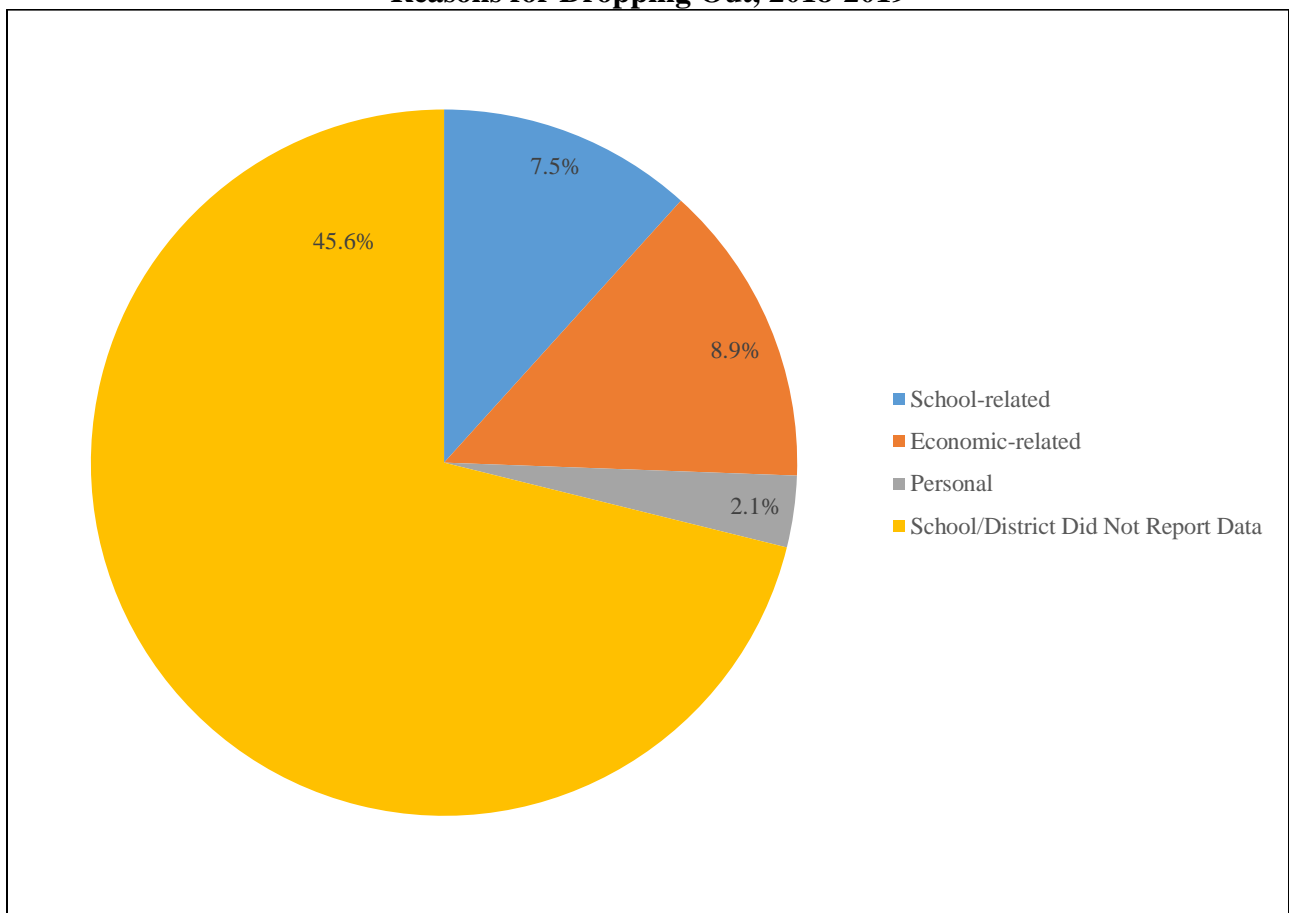
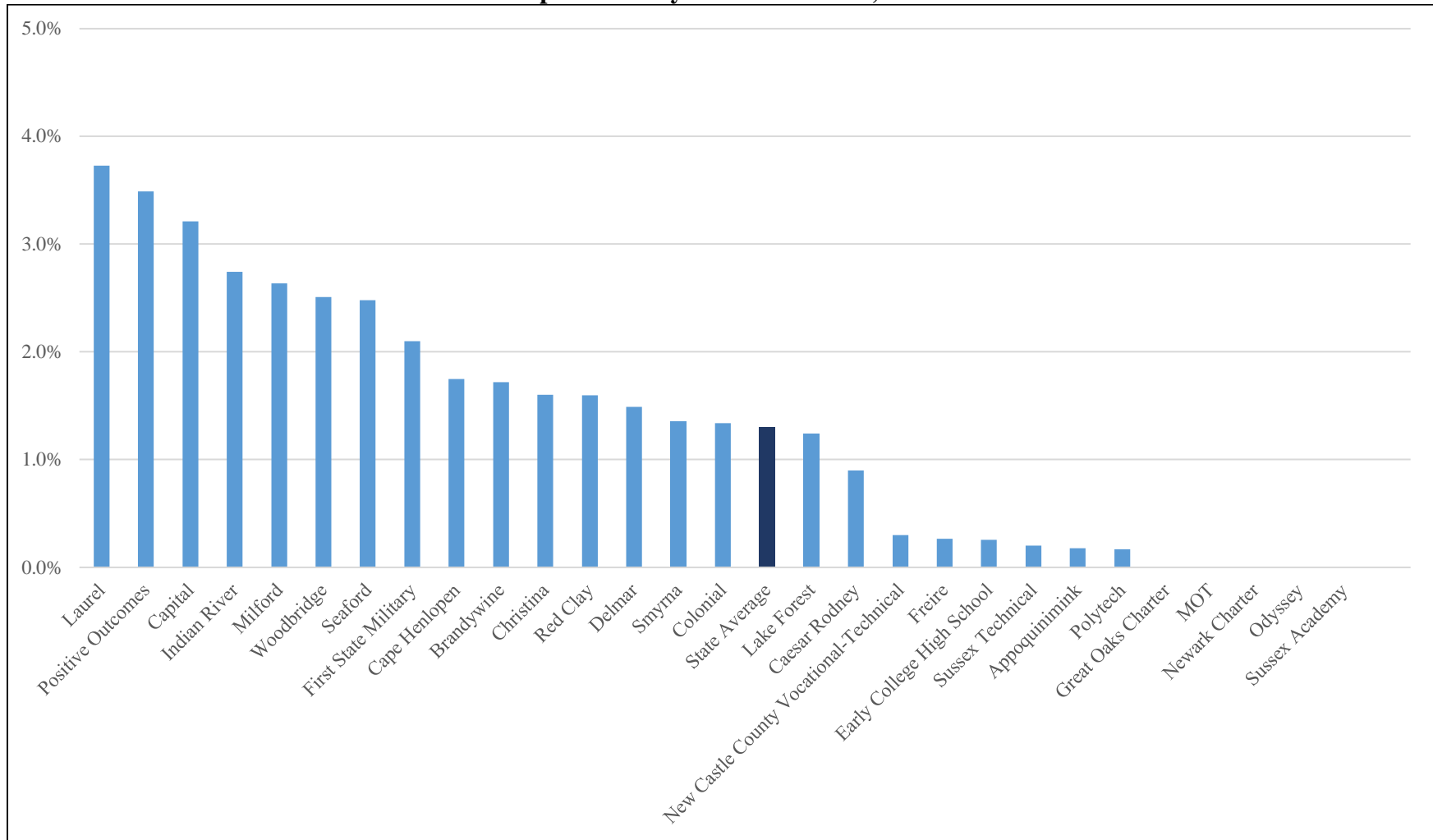


Table 6
Annual Dropout Rate by District/Charter, 2016-2019

District/Charter	2016-2017 Dropout Rate	2017-2018 Dropout Rate	2018-2019 Dropout Rate
Appoquinimink	0.6%	0.5%	0.2%
Brandywine	2.0%	1.6%	1.7%
Caesar Rodney	0.7%	0.9%	0.9%
Cape Henlopen	0.8%	1.2%	1.8%
Capital	2.6%	3.4%	3.2%
Christina	4.3%	4.4%	1.6%
Colonial	3.2%	2.9%	1.3%
Delmar	0.8%	0.6%	1.5%
Early College High School	1.0%	0.0%	0.3%
First State Military	3.1%	1.5%	2.1%
Freire	0.0%	0.7%	0.3%
Great Oaks Charter	0.0%	0.0%	0.0%
Indian River	2.8%	2.7%	2.7%
Lake Forest	2.1%	2.7%	1.2%
Laurel	3.0%	3.3%	3.7%
Milford	3.1%	2.6%	2.6%
MOT	0.0%	0.2%	0.0%
New Castle County Vocational-Technical	0.4%	0.5%	0.3%
Newark Charter	0.0%	0.0%	0.0%
Odyssey	0.0%	0.0%	0.0%
Polytech	1.0%	0.1%	0.2%
Positive Outcomes	0.0%	4.5%	3.5%
Red Clay (includes Charter School of Wilmington and Delaware Military Academy)	1.1%	0.8%	1.6%
Seaford	4.2%	2.6%	2.5%
Smyrna	0.9%	1.1%	1.4%
Sussex Academy	0.7%	0.3%	0.0%
Sussex Technical	0.6%	1.0%	0.2%
Woodbridge	3.2%	4.8%	2.5%

Note: Special Schools and ILCs are included in district dropout summary statistics.

Figure 6
Annual Dropout Rate by District Charter, 2018-2019



**Table 7
Annual Dropout Rate by School, 2016-2019**

High Schools	16-17 Dropout Rate	17-18 Dropout Rate	18-19 Dropout Rate
A. I. duPont High	0.8%	0.6%	3.0%
Appoquinimink High School	0.5%	0.7%	0.1%
Brandywine High School	3.1%	2.5%	3.3%
Brennen School (The)	0.0%	0.0%	0.0%
Caesar Rodney High School	0.7%	0.9%	0.8%
Calloway (Cab) School of the Arts	0.0%	0.0%	0.0%
Cape Henlopen High School	0.9%	1.2%	1.8%
Charter School of Wilmington	0.0%	0.1%	0.0%
Christiana High School	6.2%	4.1%	2.7%
Concord High School	2.0%	1.4%	1.0%
Conrad Schools of Science	0.0%	0.0%	0.0%
Delaware Military Academy	0.0%	0.2%	0.2%
Delaware School for the Deaf School (DSD)	0.0%	0.0%	0.0%
Delcastle Technical High School	0.7%	0.8%	0.3%
Delmar High School	0.8%	0.6%	1.5%
Dickinson (John) School	5.9%	4.3%	5.9%
Dover High School	2.3%	2.7%	2.8%
Early College High School at Del State	1.0%	0.0%	0.3%
Ennis (Howard T.) School	0.0%	0.0%	1.7%
First State Military Academy	3.1%	1.5%	2.1%
First State School	0.0%	0.0%	0.0%
Freire Charter School	0.0%	0.7%	0.3%
Glasgow High School	3.4%	2.9%	1.7%
Great Oaks Charter School	0.0%	0.0%	0.0%
Hodgson (Paul M.) Vocational Technical High School	0.3%	0.4%	0.2%
Howard High School of Technology	0.6%	0.9%	0.7%
Indian River High School	1.6%	1.8%	2.0%
John S. Charlton School	0.0%	0.0%	3.1%
Kent County Community School	0.0%	1.8%	3.6%
Kent County Secondary	12.5%	21.6%	14.3%
Lake Forest High School	2.1%	2.7%	1.2%

High School	16-17 Dropout Rate	17-18 Dropout Rate	18-19 Dropout Rate
Laurel Senior High School	3.0%	3.3%	3.7%
Leach (John G.) School	4.8%	0.0%	0.0%
McKean (Thomas) High School	2.1%	0.8%	2.6%
Meadowood Program	0.0%	0.0%	0.0%
Middletown High School	0.7%	0.3%	0.2%
Milford Senior High School	3.1%	2.7%	2.6%
MOT Charter School	0.0%	0.2%	0.0%
Mount Pleasant High School	1.2%	1.2%	1.2%
Newark Charter School	0.0%	0.0%	0.0%
Newark High School	2.1%	4.6%	1.5%
Odyssey Charter School	0.0%	0.0%	0.0%
Penn (William) High School	2.8%	2.3%	1.1%
POLYTECH High School	1.0%	0.1	0.2%
Positive Outcomes Charter School	0.0%	4.5%	3.5%
Seaford Senior High School	4.2%	2.6%	2.5%
Smyrna High School	0.9%	1.1%	1.4%
St. Georges Technical High School	0.1%	0.0%	0.0%
Sussex Academy	0.7%	0.3%	0.0%
Sussex Central High School	3.7%	3.0%	3.1%
Sussex Consortium	0.0%	1.2%	1.0%
Sussex Technical High School	0.6%	1.0%	0.2%
Wallace Wallin School	10.4%	16.3%	5.6%
Woodbridge High School	3.2%	4.8%	2.5%

Note: Special Schools and ILCs are included in district dropout summary statistics.

Table 8
Students with Disabilities Dropout Summary Statistics, 2016-2019

Race/Ethnicity	2016-2017			2017-2018			2018-2019		
	Total Enrolled	Total Dropout	Dropout Rate	Total Enrolled	Total Dropout	Dropout Rate	Total Enrolled	Total Dropout	Dropout Rate
African American	2,580	71	2.8%	2,714	72	2.7%	2,732	64	2.3%
Hispanic	795	20	2.5%	894	21	2.3%	973	15	1.5%
White/Other	2,810	56	2.0%	2,861	75	2.6%	2,909	56	1.9%
Total	6,185	147	2.4%	6,469	168	2.6%	6,614	135	2.0%

Figure 7
Students with Disabilities Dropout Summary Statistics, 2016-2019

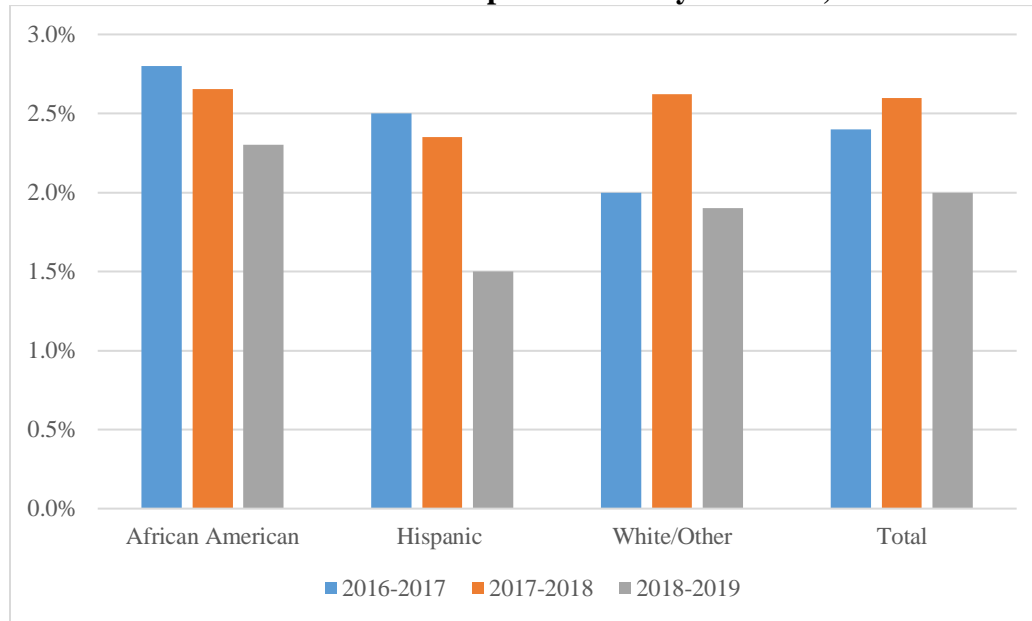
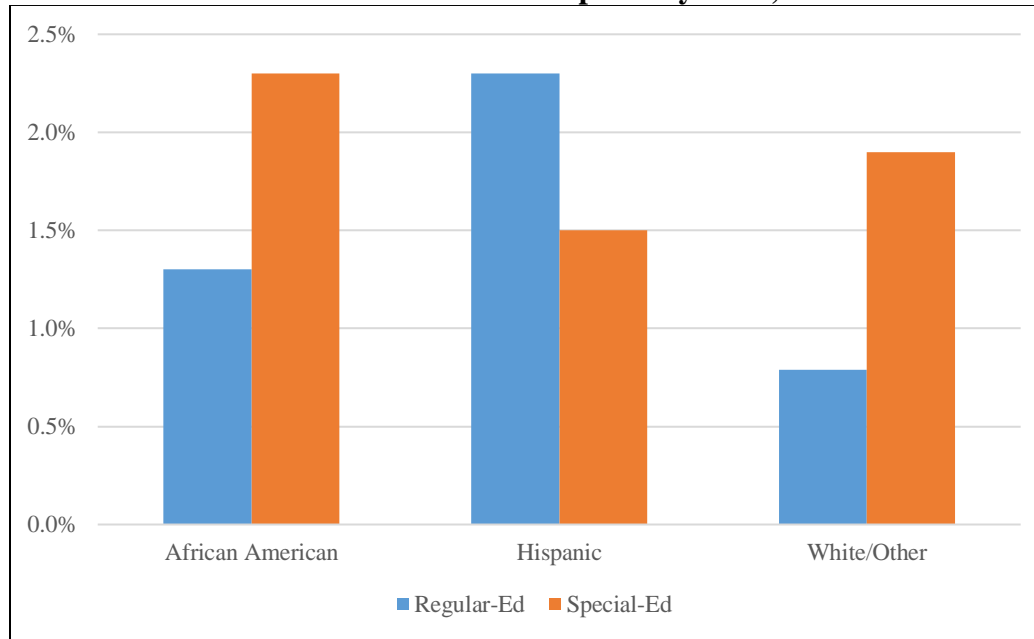


Table 9
Students with Disabilities Dropouts by Race, 2018-2019

	African American			Hispanic or Latino			White/Other			All		
	Total Students	Dropout Students	Dropout Rate	Total Students	Dropout Students	Dropout Rate	Total Students	Dropout Students	Dropout Rate	Total Students	Dropout Students	Dropout Rate
Regular-Ed	10,476	141	1.3%	5,859	137	2.3%	19,016	146	0.8%	35,351	424	1.2%
Special-Ed	2,732	6864	2.3%	973	15	1.5%	2,909	56	1.9%	6,614	135	2.0%
Total	13,208	205	1.6%	6,832	153	2.2%	21,925	202	0.9%	41,965	559	1.3%

Figure 8
Students with Disabilities Dropouts by Race, 2018-2019



Appendix A

Criteria for being identified as a dropout:

- A student who completed the **previous** school year and who did **not** reach his or her 16th birthday by the beginning of the **current** school and did not attend any days of the **current** school year is considered "dropout underage" from the receiving school. This student should be coded in eSchoolPLUS as **Dropout-Underage**. This underage dropout should have a withdrawal date that is the same as the entry date (i.e., first day of school of the reporting year).
- A student who completed the **previous** school year and who did reach his or her 16th birthday by the beginning of the **current** school and did not attend any days of the **current** school year is considered "dropout-truancy" from the receiving school. This student should be coded in eSchoolPLUS as **Dropout-Truancy**. This dropout should have a withdrawal date that is the same as the entry date (i.e., first day of school of the reporting year).
- If a student has moved and there is no official documentation that he or she has transferred to another school, he or she is counted as a dropout and code in eSchoolPLUS as **Dropout-Underage or Dropout-Truancy** depending on age.
- A student who transfers to James H. Groves Adult High School during the current school year and is not in attendance (enrolled) by **September 30** of the next school year, is counted as **Dropout-Academic** from the home school.
- A student who transfers to James H. Groves Adult Basic Education (ABE) programs during the current school year is counted as **Dropout-Academic** from the home school.
- An expelled student is counted as a dropout if he or she does not return at the end of the disciplinary period. This student should be coded in eSchoolPLUS as **Dropout-Behavior**.
- A school leaver who has joined the military is counted as a dropout. This student should be coded in eSchoolPLUS as **Dropout-Military**.
- A school leaver who has joined Job Corps is counted as a dropout. This student should be coded in eSchoolPLUS as **Dropout-Employment**.
- A student withdrawn because of truancy is counted as a dropout. This student shall be coded in eSchoolPLUS as **Dropout-Underage or Dropout-Truancy** depending on age. (A student with an active truancy case with the Justice of the Peace Court shall not be withdrawn from eSchoolPLUS.)

Criteria for not being identified as a dropout:

- A student who remains enrolled in a public school in the State.
- A student who receives a diploma or in the case of a special education student a district or charter school issued "Certificate", or a diploma of alternate achievement standards should not be reported as a dropout.
- A student who transfers to another public or private school should not be reported as a dropout. Documentation of transfer needs to be preserved.
- A student who moves out of state should not be reported as a dropout. Documentation of the move needs to be preserved.
- A student who dies should not be reported as a dropout.
- A school leaver who is in a correctional institution or other state agency placement should not be counted as a dropout.
- A student who leaves the United States is not considered to be a dropout even if the school district cannot document the student's subsequent enrollment in school.