



2016-2017 Delaware Dropout Summary Statistics

March 2018



Report Prepared by:

Delaware Department of Education
401 Federal Street, Suite 2
Dover, Delaware 19901

State Board of Education

Dennis L. Loftus, Ed.D., President

Nina Lou Bunting, Vice President

Barbara Rutt, J.D.

Terry M. Whittaker, Ed.D.

Liane M. Sorenson

Wali W. Rushdan, II

Donna Johnson, Executive Director

Susan Bunting, Executive Secretary

Officers of the Department of Education

Susan Bunting

Secretary of Education

Karen Field Rogers

Deputy Secretary of Education

Performance Support/Operations Support

The Department of Education is an equal opportunity employer. It does not discriminate on the basis of race, color, religion, national origin, sex, sexual orientation, gender identity, marital status, disability, age, genetic information, or veteran's status in employment or its programs and activities. Inquiries should be directed to the Department's Human Resource Officer, 401 Federal Street, Suite 2, Dover, Delaware 19901. Telephone Number: (302) 735-4030.

Ensuring Confidentiality of Individual Student Data

The Delaware Department of Education is legally required to protect the confidentiality of data that could be used to identify individual students. Legal requirements for protecting the data are detailed in the Family Education Rights and Privacy Act (FERPA) (20 U.S.C. § 1232G; 34 CFR Part 99). FERPA requires that these data be protected to ensure they cannot be used to identify the attributes of any individual student. Beyond the natural barriers to precise identification, including differential time frames and net transfer effects, additional disclosure mitigation methods have been applied to these data to ensure confidentiality.

Executive Summary

The Delaware Department of Education (DDOE) report on dropouts is from data collected annually. Delaware collects data from all public schools including grades 7 through 12, but calculates the yearly dropout rate from grades 9 through 12, as is prescribed by the National Center for Educational Statistics (NCES), which provides data to the federal reporting system.

In accordance with NCES requirements, Delaware uses the *event dropout rate*, which measures the proportion of students who drop out in a single school year. This is the rate the State has reported since 1994. See Appendix A for additional details about the dropout calculation.

This report does not contain data reflecting private, parochial, or home school students in Delaware. The State does gather information from families that home school their children as well as from private schools, but only does so to verify the transfer of a student from public to private and home schools.

Highlights

- Last year, out of 40,884 students enrolled in grades 9-12, 700 students left school.
- The statewide annual dropout rate for school year 2016-2017 was 1.7%. This is a slight increase from school year 2015-2016 when the dropout rate was 1.4%.
- Of the 700 dropouts, 59.7% were male and 40.3% were female.
- During the 2016-2017 school year, 2.2% of African American, 2.7% of Hispanic and 1.2% of White/Other students dropped out.
- The largest number of dropouts were from students enrolled in the 10th grade (246 students or 35.1%). Students enrolled in 12th grade represented the lowest proportion of students who dropped out (105 students or 15.0%).
- Academic, personal and economic reasons were cited by students as the reasons they dropped out.

**Table 1
Dropout Summary Statistics**

	14-15 Dropout Rate	15-16 Dropout Rate	16-17 Dropout Rate
Total Dropouts	817	547	700
Total Rate	2.2%	1.4%	1.7%
<u>Sex</u>			
Male	1.7%	1.7%	2.0%
Female	1.0%	1.0%	1.4%
<u>Race/Ethnicity</u>			
American Indian	2.7%	2.7%	2.4%
African American	1.9%	1.9%	2.2%
Asian	0.2%	0.2%	0.3%
Hispanic	2.2%	2.2%	2.7%
White/Other	0.9%	0.9%	1.2%
Hawaiian	2.2%	2.2%	2.0%
Multiracial	0.8%	0.8%	1.5%
<u>Age</u>			
Less than 15	0.2%	0.2%	0.1%
Age 15	0.7%	0.7%	0.2%
Age 16	1.2%	1.2%	1.3%
Age 17 and over	3.5%	3.5%	5.8%

**Figure 1
Delaware Dropout Summary Statistics**

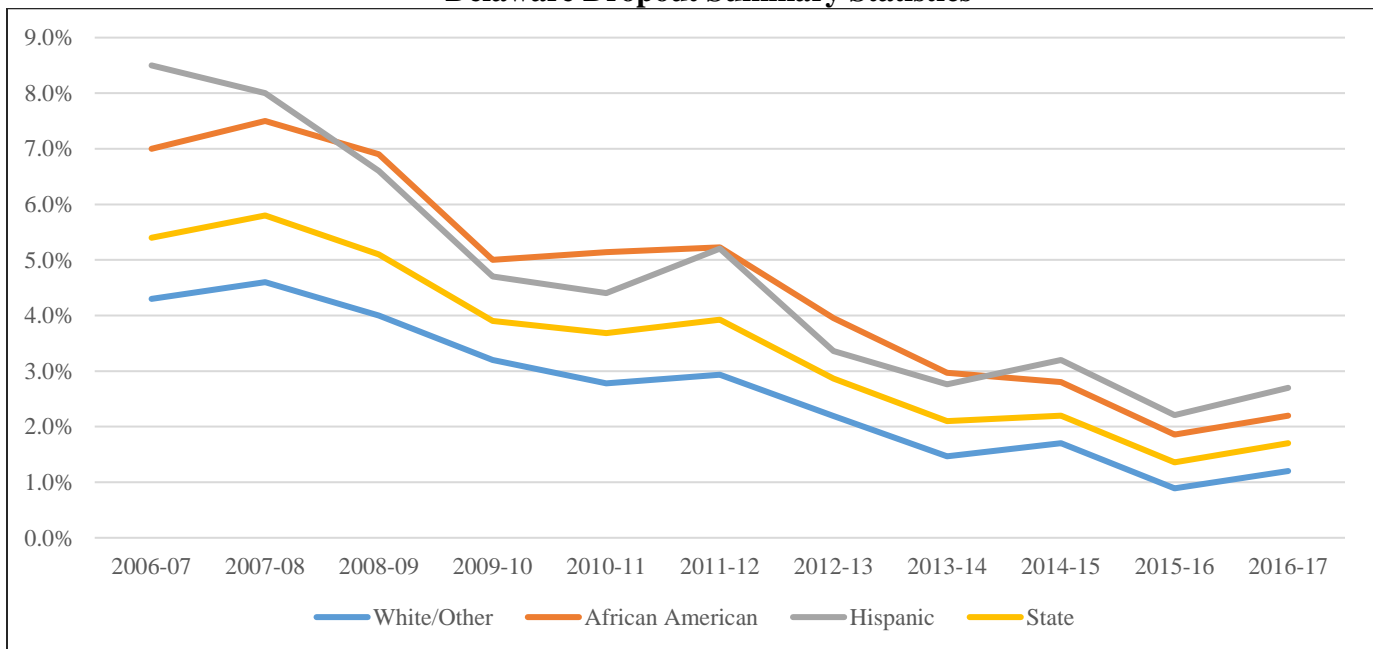


Table 2
Dropouts by Race and Grade, 2016-2017

Grade	African American			Hispanic			White/Other			All		
	Total Students	Dropout Students	Dropout Rate	Total Students	Dropout Students	Dropout Rate	Total Students	Dropout Students	Dropout Rate	Total Students	Dropout Students	Dropout Rate
9	3,911	81	2.1%	1,937	60	3.1%	5,876	62	1.1%	11,724	203	1.7%
10	3,412	106	3.1%	1,553	54	3.5%	5,579	86	1.5%	10,544	246	2.3%
11	2,941	61	2.1%	1,265	31	2.5%	5,313	54	1.0%	9,519	146	1.5%
12	2,645	33	1.2%	1,213	16	1.3%	5,239	56	1.1%	9,097	105	1.2%
Total	12,909	281	2.2%	5,968	161	2.7%	22,007	258	1.2%	40,884	700	1.7%

Figure 2
Number of Dropouts by Race and Grade, 2016-2017

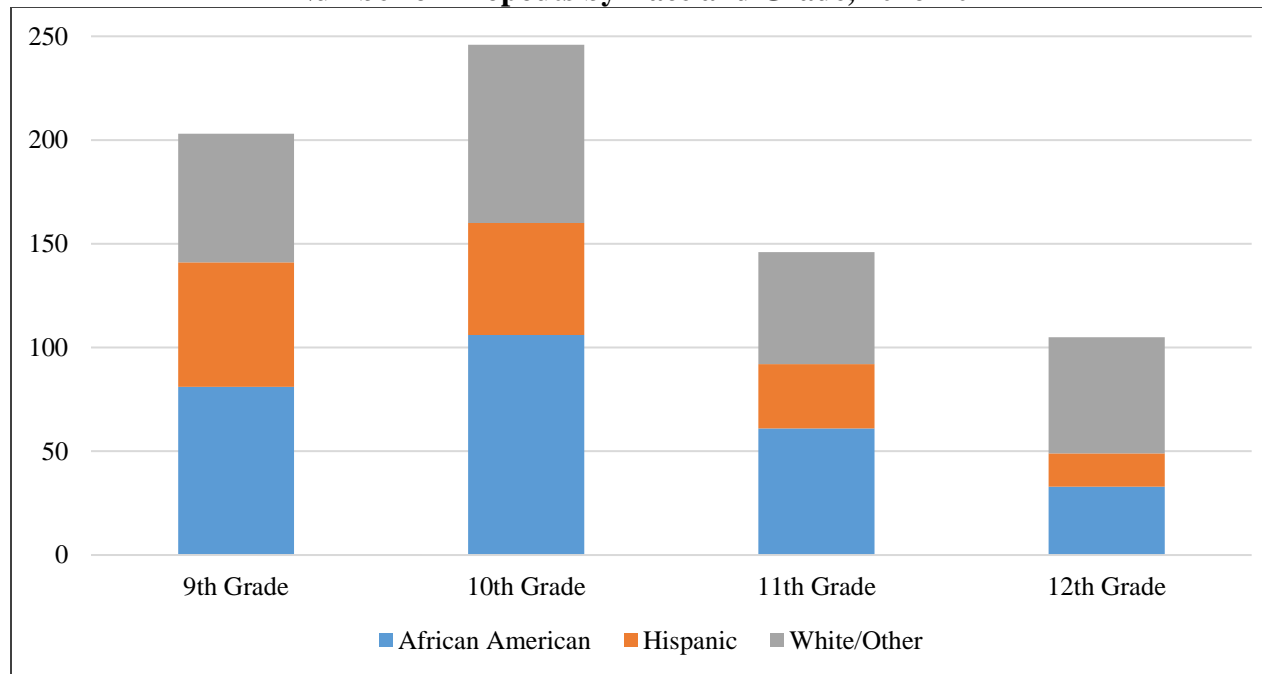


Table 3

Dropouts by Race and Gender, 2016-2017

Gender	African American			Hispanic			White/Other			All		
	Total Students	Dropout Students	Dropout Rate	Total Students	Dropout Students	Dropout Rate	Total Students	Dropout Students	Dropout Rate	Total Students	Dropout Students	Dropout Rate
Male	6,538	169	2.6%	3,055	85	2.8%	11,384	164	1.4%	20,977	418	2.0%
Female	6,371	112	1.8%	2,913	76	2.6%	10,623	94	0.9%	19,907	282	1.4%
Total	12,909	281	2.2%	5,968	161	2.7%	22,007	258	1.2%	40,884	700	1.7%

Figure 3
Number of Dropouts by Race and Gender, 2016-2017

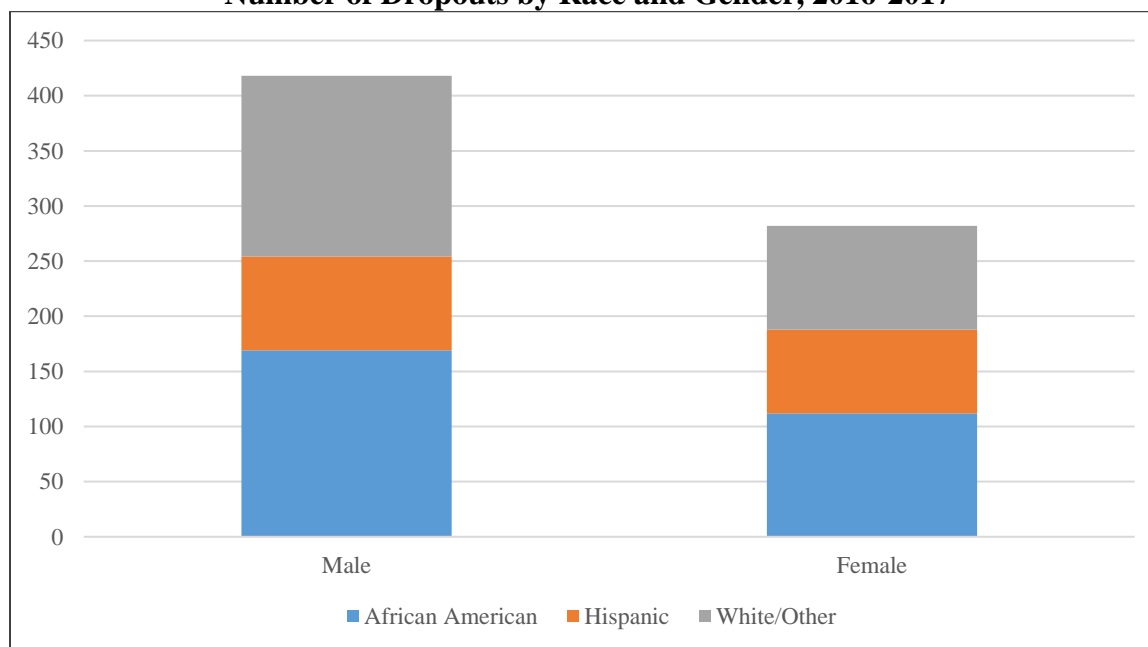


Table 4
Dropout Summary by County

County	2014-2015 Dropout Rate	2015-2016 Dropout Rate	2016-2017 Dropout Rate
New Castle	2.1%	1.3%	1.6%
Kent	1.9%	1.3%	1.5%
Sussex	2.2%	1.6%	2.2%

Figure 4
Dropout Summary by County

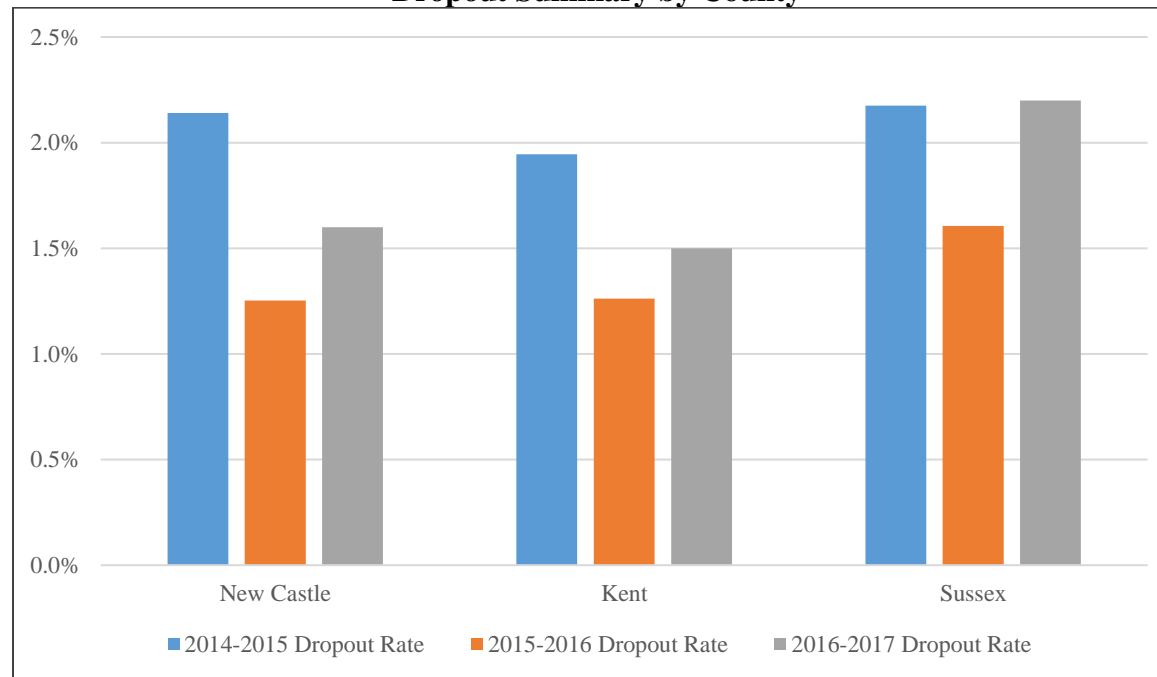


Table 5
Dropouts by County and Race, 2016-2017

County	African American			Hispanic			White/Other			All		
	Total Students	Dropout Students	Dropout Rate	Total Students	Dropout Students	Dropout Rate	Total Students	Dropout Students	Dropout Rate	Total Students	Dropout Students	Dropout Rate
New Castle	8,287	182	2.2%	3558	75	2.1%	11,369	117	1.0%	23,214	374	1.6%
Kent	2,872	53	1.8%	662	13	2.0%	4,737	56	1.2%	8,271	122	1.5%
Sussex	1,750	46	2.6%	1748	73	4.2%	5,901	85	1.4%	9,399	204	2.2%
Total	12,909	281	2.2%	5,968	161	2.7%	22,007	258	1.2%	40,884	700	1.7%

Figure 5
Number of Dropouts by County and Race, 2016-2017

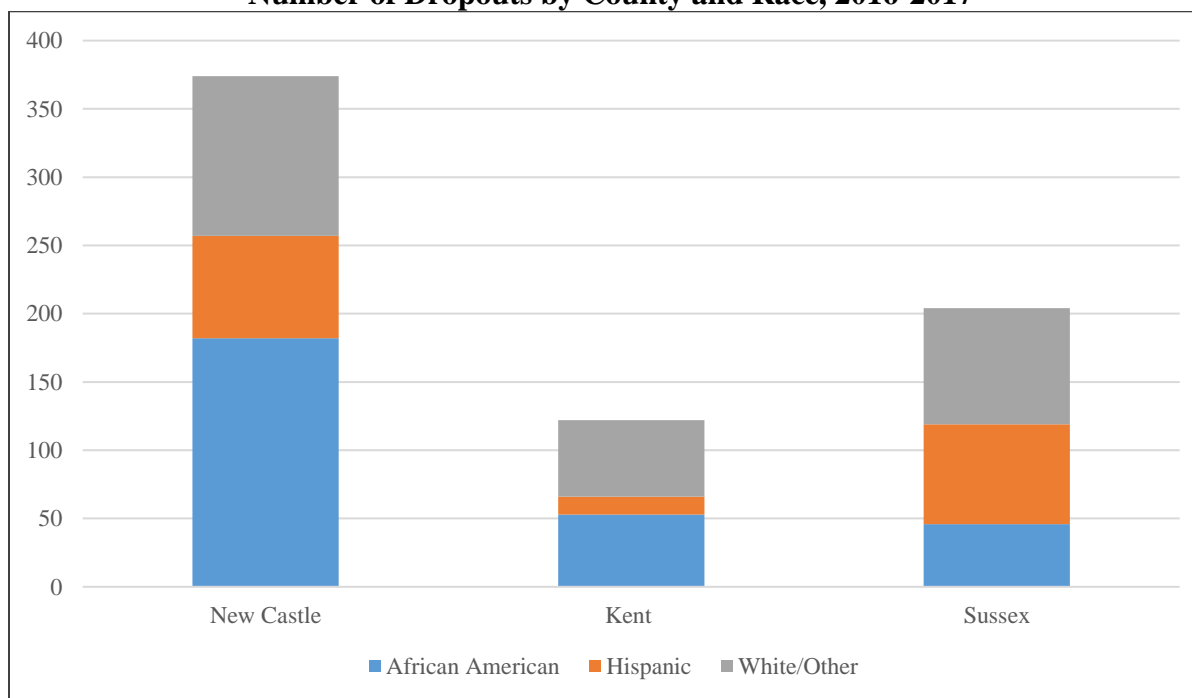


Table 6
Dropouts by County and Grade, 2016-2017

County	9th			10th			11th			12th			Total Students		
	Total Students	Dropout Students	Dropout Rate	Total Students	Dropout Students	Dropout Rate	Total Students	Dropout Students	Dropout Rate	Total Students	Dropout Students	Dropout Rate	Total Students	Dropout Students	Dropout Rate
New Castle	6,556	104	1.6%	5,983	125	2.1%	5,418	88	1.6%	5,257	57	1.1%	23,214	374	1.6%
Kent	2,444	28	1.1%	2,101	50	2.4%	1,953	21	1.1%	1,773	23	1.3%	8,271	122	1.5%
Sussex	2,724	71	2.6%	2,460	71	2.9%	2,148	37	1.7%	2,067	25	1.2%	9,399	204	2.2%
Total	11,724	203	1.7%	10,544	246	2.3%	9,519	146	1.5%	9,097	105	1.2%	40,884	700	1.7%

Figure 6
Number of Dropouts by County and Grade, 2016-2017

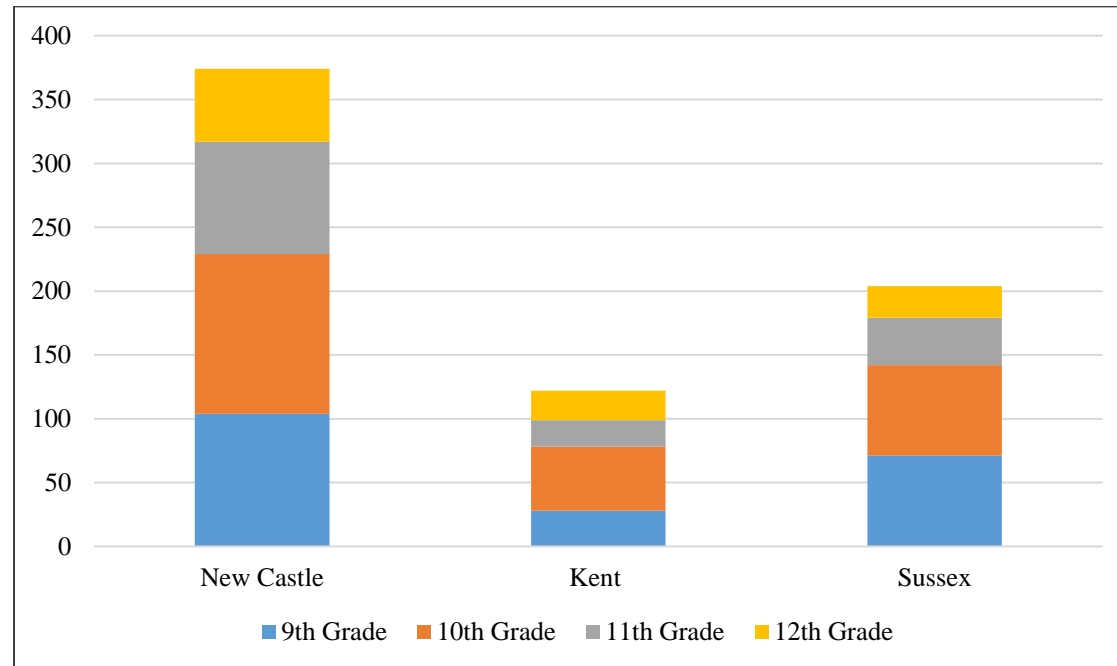
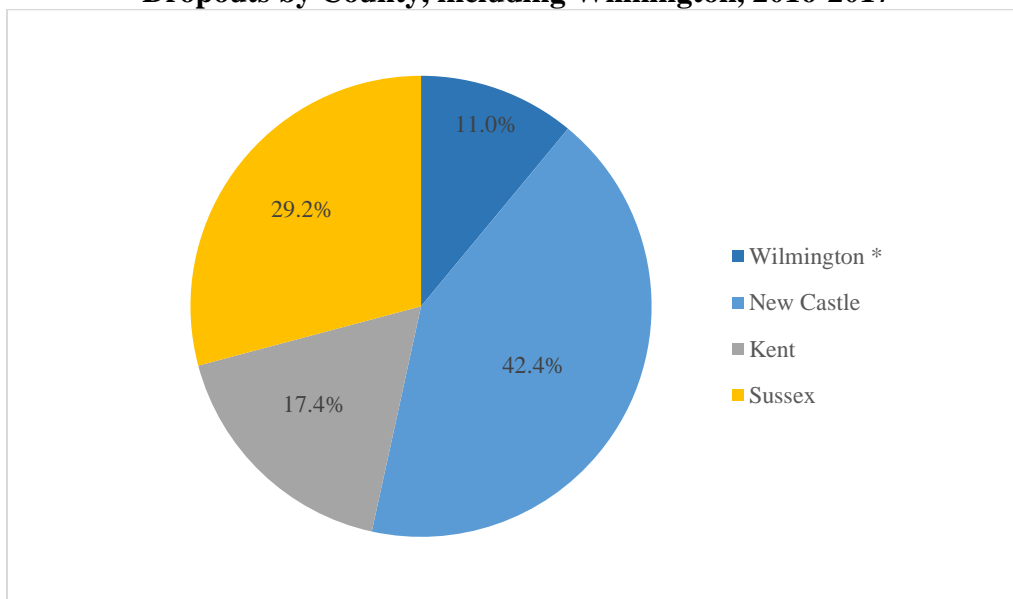


Table 7
Dropouts by County, including Wilmington, 2016-2017

County/City	Dropouts	Percentage of Dropouts
Wilmington*	77	11.0%
New Castle	297	42.4%
Kent	122	17.4%
Sussex	204	29.2%
Total	700	100.0%

Figure 7
Dropouts by County, including Wilmington, 2016-2017



* Wilmington dropouts are defined as students who reside in zip codes 19801 and 19802

Figure 8
Dropouts by Geographic Area, 2016-2017

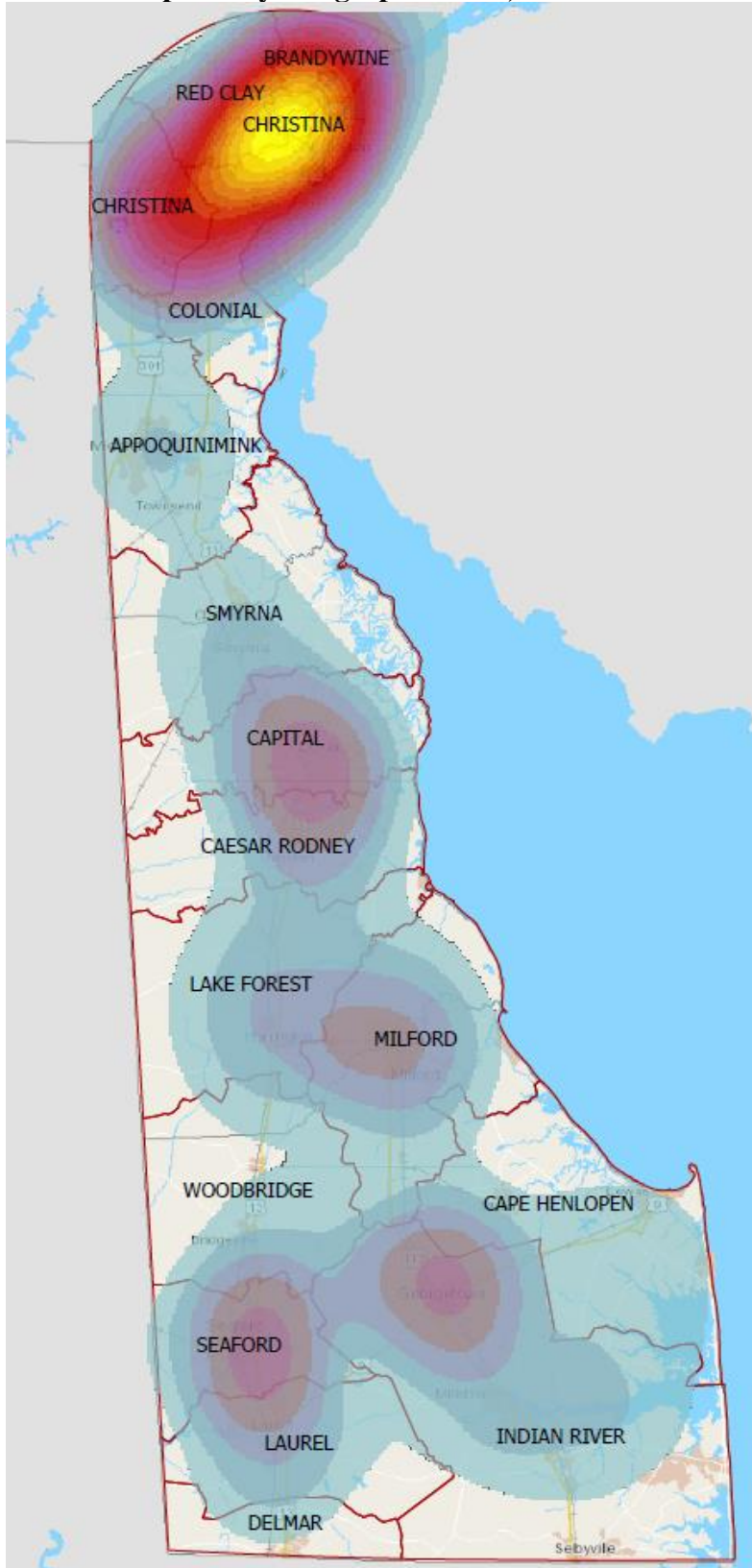


Table 8

Reasons for Dropping Out, 2016-2017

Reason	Number	Percent
School-Related	54	7.7%
Economic-Related	92	13.2%
Personal	5	0.7%
School/District Did Not Report Data	549	78.4%
Total	700	100.0%

Figure 9
Reasons for Dropping Out, 2016-2017

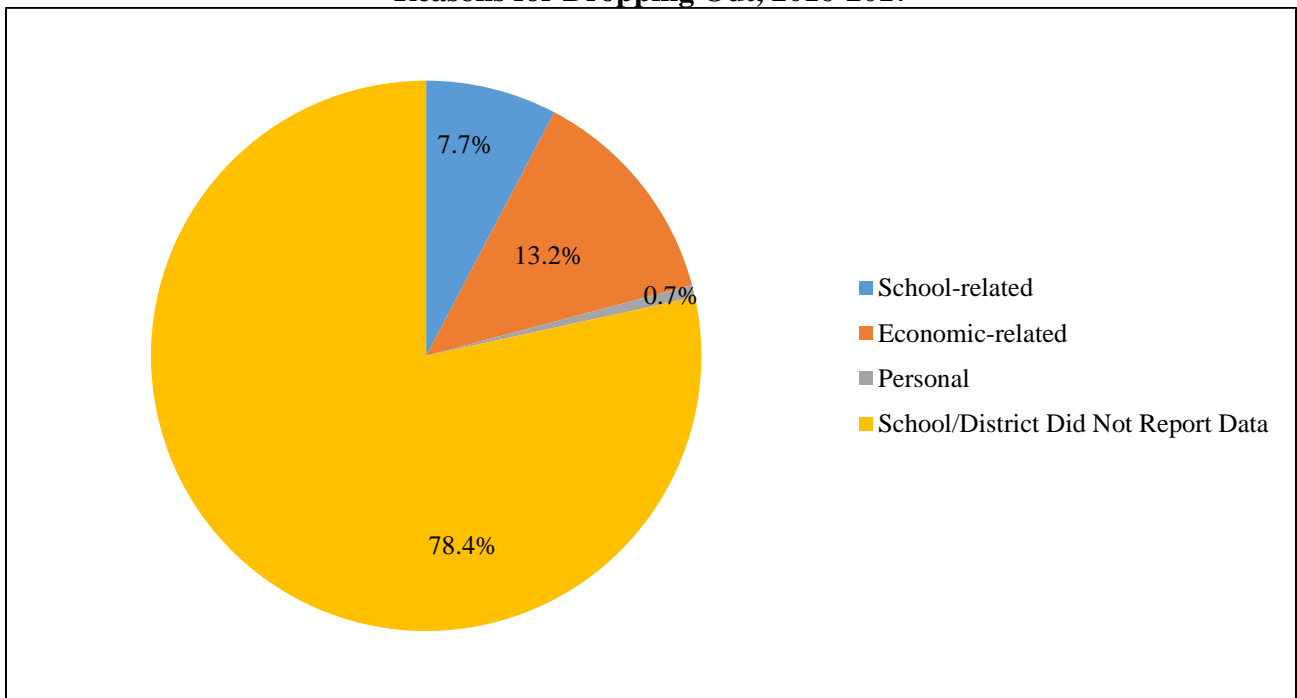


Table 9
Annual Dropout Rate by District/Charter

District/Charter	2014-2015 Dropout Rate	2015-2016 Dropout Rate	2016-2017 Dropout Rate
Appoquinimink	0.8%	0.3%	0.6%
Brandywine	2.6%	1.8%	2.0%
Caesar Rodney	1.9%	0.9%	0.7%
Cape Henlopen	0.9%	0.6%	0.8%
Capital	2.6%	2.7%	2.6%
Christina	3.9%	2.4%	4.3%
Colonial	3.9%	3.1%	3.2%
DE Academy of Public Safety and Security	8.3%	1.0%	3.7%
Delaware Design Lab	-	0.0%	0.0%
Delmar	1.3%	1.1%	0.8%
Early College High School	10.1%	0.0%	1.0%
First State Military	-	2.5%	3.1%
Freire	-	-	0.0%
Indian River	3.6%	2.3%	2.8%
Lake Forest	1.7%	0.8%	2.1%
Laurel	4.1%	4.0%	3.0%
Milford	2.2%	1.1%	3.1%
MOT	-	-	0.0%
New Castle County Vocational-Technical	0.4%	0.3%	0.4%
Newark Charter	0.3%	0.0%	0.0%
Odyssey	-	-	0.0%
Polytech	1.1%	0.1%	1.0%
Positive Outcomes	5.1%	3.1%	0.0%
Red Clay (includes Charter School of Wilmington and Delaware Military Academy)	1.7%	0.9%	1.1%
Seaford	2.8%	1.9%	4.2%
Smyrna	1.6%	1.1%	0.9%
Sussex Academy	4.4%	0.5%	0.7%
Sussex Technical	0.5%	0.1%	0.6%
Woodbridge	2.1%	3.5%	3.2%

Note: Special Schools and ILCs **are included** in district dropout summary statistics.

“-“ denotes schools who’s prior dropout rates could not be calculated.

Figure 10
Annual Dropout Rate by District Charter, 2016-2017

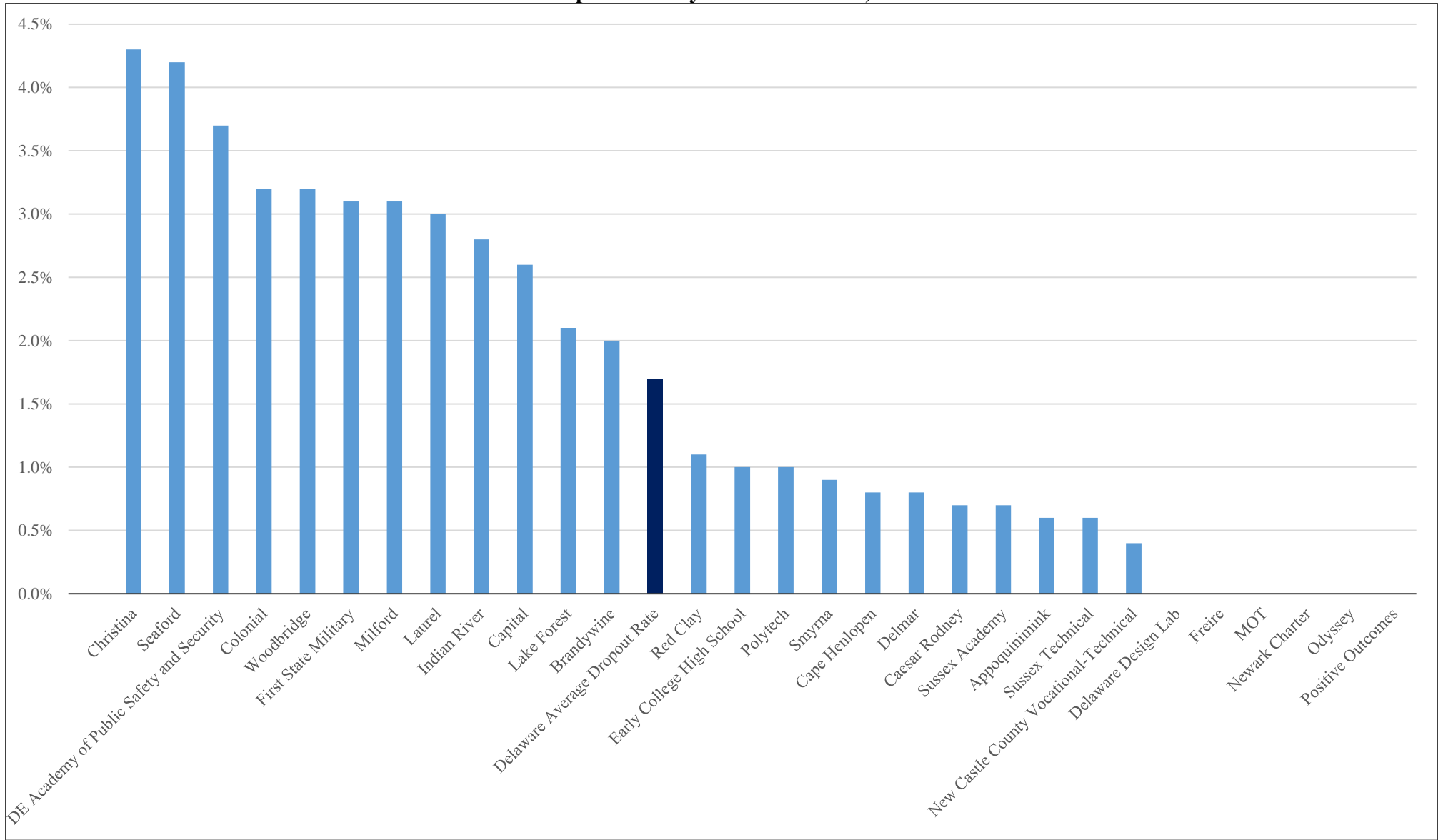


Table 10
Annual Dropout Rate by School

High Schools	2014-2015 Dropout Rate	2015-2016 Dropout Rate	2016-2017 Dropout Rate
A. I. duPont High	1.5%	0.9%	0.8%
Appoquinimink High	0.8%	0.4%	0.5%
Brandywine High	2.9%	2.2%	3.1%
Brennen School	-	-	0.0%
Caesar Rodney High	1.8%	0.9%	0.7%
Callaway School of the Arts	0.0%	0.0%	0.0%
Cape Henlopen High	0.7%	0.6%	0.9%
Carver Education Center	-	-	2.3%
Charter School of Wilmington	0.2%	0.1%	0.0%
Christiana High	5.7%	1.4%	6.2%
Concord High	1.8%	2.6%	2.0%
Conrad School of Science	0.0%	0.0%	0.0%
Delaware Academy of Public Safety and Security	8.3%	1.0%	3.7%
Delaware Design Lab	-	0.0%	0.0%
Delaware Military Academy	0.9%	0.2%	0.0%
Delaware School for the Deaf	-	-	0.0%
Delcastle Technical High	0.2%	0.2%	0.7%
Delmar High	1.3%	1.1%	0.8%
Dickinson High	5.7%	3.5%	5.9%
Douglass School	-	-	21.3%
Dover High	2.1%	1.5%	2.3%
Early College High at DSU	10.1%	0.0%	1.0%
Ennis (Howard T.)	-	-	0.0%
First State Military	-	-	3.1%
First State School	-	-	0.0%
Freire Charter	-	-	0.0%
Glasgow High	2.6%	2.4%	3.4%
Hodgson Vocational Technical High	0.5%	0.4%	0.3%
Howard High School of Technology	1.2%	0.3%	0.6%
Indian River High	0.7%	0.7%	1.6%
John Charlton School	-	-	0.0%
High School	2014-	2015-	2016-

	2015 Dropout Rate	2016 Dropout Rate	2017 Dropout Rate
Kent County Community	-	-	0.0%
Kent County Secondary	-	-	12.5%
Lake Forest High	1.7%	0.8%	2.1%
Laurel High	4.0%	4.0%	3.0%
Leach School	-	-	4.8%
McKean High	3.0%	1.3%	2.1%
Meadowood Program	-	-	0.0%
Middletown High	0.9%	0.2%	0.7%
Milford High	2.2%	1.1%	3.1%
MOT Charter School	1.2%	0.0%	0.0%
Mount Pleasant High	3.1%	0.7%	1.2%
Newark Charter	0.3%	0.0%	0.0%
Newark High	3.0%	1.2%	2.1%
Odyssey Charter	-	-	0.0%
Polytech High	1.1%	0.1%	1.0%
Positive Outcomes	5.1%	3.1%	0.0%
Pyle (Sarah) Academy			13.2%
Seaford High	2.8%	1.9%	4.2%
Smyrna High	1.6%	1.1%	0.9%
St. Georges Technical High	0.0%	0.1%	0.1%
Sussex Academy	4.4%	0.5%	0.7%
Sussex Central High	4.9%	3.5%	3.7%
Sussex Consortium	-	-	0.0%
Sussex Technical High	0.5%	0.1%	0.6%
Wallace Wallin School	-	-	10.4%
William Penn High	2.7%	2.5%	2.8%
Woodbridge High	2.1%	3.5%	3.2%

Note: Special Schools and ILCs **are included** in district dropout summary statistics.

“-“ denotes schools who's prior dropout rates could not be calculated.

Table 11
Students with Disabilities Dropout Summary Statistics

Race/Ethnicity	2014-2015			2015-2016			2016-2017		
	Total Enrolled	Total Dropout	Dropout Rate	Total Enrolled	Total Dropout	Dropout Rate	Total Enrolled	Total Dropout	Dropout Rate
African American	2,397	92	3.8%	2,543	70	2.8%	2,580	71	2.8%
Hispanic	660	23	3.5%	730	24	3.3%	795	20	2.5%
White/Other	2,535	78	3.1%	2,713	58	2.1%	2,810	56	2.0%
Total	5,592	193	3.5%	5,986	152	2.5%	6,185	147	2.4%

Figure 11
Students with Disabilities Dropout Summary Statistics

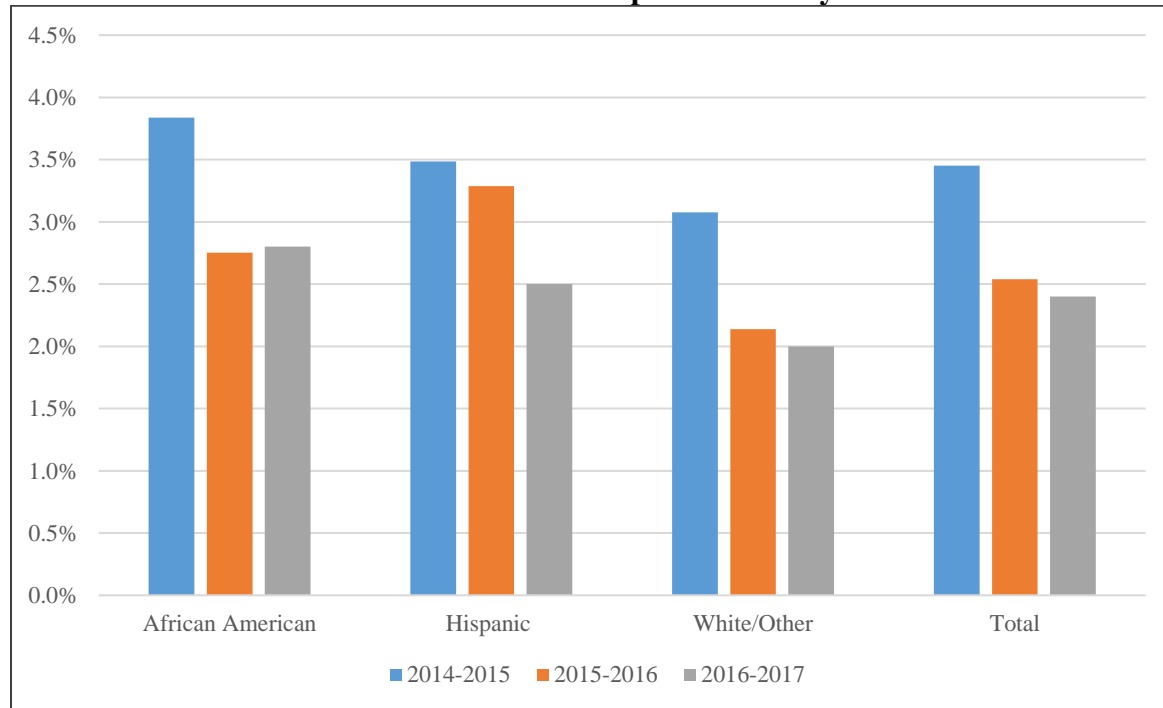
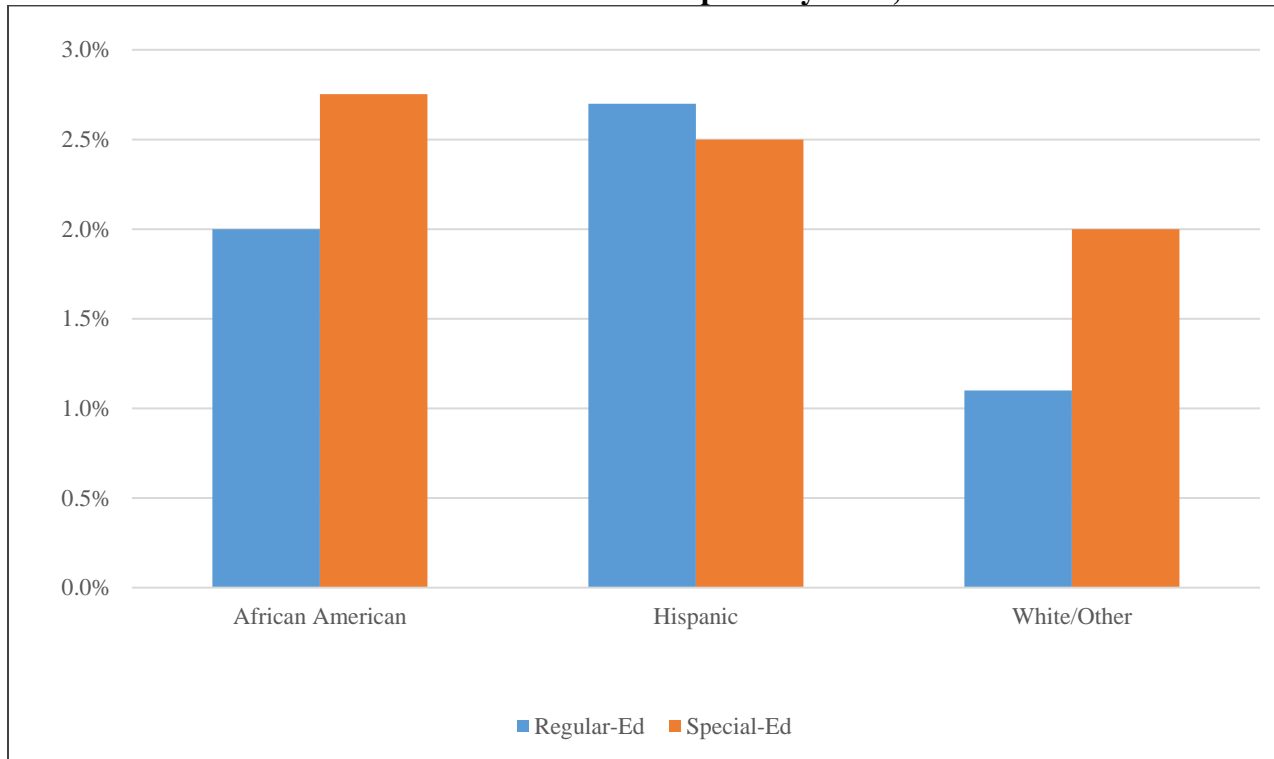


Table 12
Students with Disabilities Dropouts by Race, 2016-2017

	African American			Hispanic			White/Other			All		
	Total Students	Dropout Students	Dropout Rate	Total Students	Dropout Students	Dropout Rate	Total Students	Dropout Students	Dropout Rate	Total Students	Dropout Students	Dropout Rate
Regular-Ed	10,329	210	2.0%	5173	141	2.7%	19,197	202	1.1%	34,699	553	1.6%
Special-Ed	2,580	71	2.8%	795	20	2.5%	2,810	56	2.0%	6,185	147	2.4%
Total	12,909	281	2.2%	5,968	161	2.7%	22,007	258	1.2%	40,884	700	1.7%

Figure 12
Students with Disabilities Dropouts by Race, 2016-2017



Appendix A

Criteria for being identified as a dropout:

- A student who completed the **previous** school year and who did **not** reach his or her 16th birthday by the beginning of the **current** school and did not attend any days of the **current** school year is considered "dropout underage" from the receiving school. This student should be coded in eSchoolPLUS as **Dropout-Underage**. This underage dropout should have a withdrawal date that is the same as the entry date (i.e., first day of school of the reporting year).
- A student who completed the **previous** school year and who did reach his or her 16th birthday by the beginning of the **current** school and did not attend any days of the **current** school year is considered "dropout-truancy" from the receiving school. This student should be coded in eSchoolPLUS as **Dropout-Truancy**. This dropout should have a withdrawal date that is the same as the entry date (i.e., first day of school of the reporting year).
- If a student has moved and there is no official documentation that he or she has transferred to another school, he or she is counted as a dropout and code in eSchoolPLUS as **Dropout-Underage or Dropout-Truancy** depending on age.
- A student who transfers to James H. Groves Adult High School during the current school year and is not in attendance (enrolled) by **September 30** of the next school year, is counted as **Dropout-Academic** from the home school.
- A student who transfers to James H. Groves Adult Basic Education (ABE) programs during the current school year is counted as **Dropout-Academic** from the home school.
- An expelled student is counted as a dropout if he or she does not return at the end of the disciplinary period. This student should be coded in eSchoolPLUS as **Dropout-Behavior**.
- A school leaver who has joined the military is counted as a dropout. This student should be coded in eSchoolPLUS as **Dropout-Military**.
- A school leaver who has joined Job Corps is counted as a dropout. This student should be coded in eSchoolPLUS as **Dropout-Employment**.
- A student withdrawn because of truancy is counted as a dropout. This student shall be coded in eSchoolPLUS as **Dropout-Underage or Dropout-Truancy** depending on age. (A student with an active truancy case with the Justice of the Peace Court shall not be withdrawn from eSchoolPLUS.)

Criteria for not being identified as a dropout:

- A student who remains enrolled in a public school in the State.
- A student who receives a diploma or in the case of a special education student a district or charter school issued "Certificate" should not be reported as a dropout.
- A student who transfers to another public or private school should not be reported as a dropout. Documentation of transfer needs to be preserved.
- A student who moves out of state should not be reported as a dropout. Documentation of the move needs to be preserved.
- A student who dies should not be reported as a dropout.
- A school leaver who is in a correctional institution or other state agency placement should not be counted as a dropout.
- A student who leaves the United States is not considered to be a dropout even if the school district cannot document the student's subsequent enrollment in school.