



2015-2016 Delaware Graduation Summary Statistics

March 2017



Prepared by:

Delaware Department of Education
401 Federal Street, Suite 2
Dover, Delaware 19901

State Board of Education

Teri Quinn Gray, Ph.D., President
Nina Lou Bunting, Vice President
Gregory B. Coverdale, Jr.
G. Patrick Heffernan
Barbara Rutt, J.D.
Terry M. Whittaker, Ed.D.
Donna Johnson, Executive Director
Susan Bunting, Executive Secretary

Officers of the Department of Education

Susan Bunting

Secretary of Education

Karen Field Rogers

Deputy Secretary of Education

Amelia E. Hodges

Associate Secretary of Education
Adult Education and School Supports

David Blowman

Associate Secretary of Education
Financial Management and Operations

Angeline Rivello

Associate Secretary of Education
Teacher and Leader Effectiveness Branch

Michael Watson

Associate Secretary of Education
Teaching and Learning

The Department of Education is an equal opportunity employer. It does not discriminate on the basis of race, color, religion, national origin, sex, sexual orientation, gender identity, marital status, disability, age, genetic information, or veteran's status in employment or its programs and activities. Inquiries should be directed to the Department's Human Resource Officer, 401 Federal Street, Suite 2, Dover, Delaware 19901. Telephone Number: (302) 735-4030.

Ensuring Confidentiality of Individual Student Data

The Delaware Department of Education is legally required to protect the confidentiality of data that could be used to identify individual students. Legal requirements for protecting the data are detailed in the Family Education Rights and Privacy Act (FERPA) (20 U.S.C. § 1232G; 34 CFR Part 99). FERPA requires that these data be protected to ensure they cannot be used to identify the attributes of any individual student. Beyond the natural barriers to precise identification, including differential time frames and net transfer effects, additional disclosure mitigation methods have been applied to these data to ensure confidentiality.

Executive Summary

The Delaware Department of Education (DDOE) report on graduation is from data collected annually. Delaware collects data from all public schools that include grade 12. Cohort graduation rates are calculated as prescribed by the National Center for Educational Statistics (NCES), which provides data to the federal reporting system. In accordance with NCES requirements, Delaware uses the ***four-year adjusted cohort graduation rate***, which measures the number and percentage of cohort members who earned a regular high school diploma within four years or less. The cohort is defined as the number of first-time 9th graders followed for four years plus students who transfer in minus students who transfer out, emigrate, or are deceased during that time period. The report also provides five-year and six-year graduation rates.

This report does not contain data reflecting private, parochial, or home school students in Delaware. The State does gather information from families that home school their children as well as from private schools, but only does so to verify the transfer of a student from public to private and home schools.

Highlights

Four-Year Adjusted Cohort

- Last year, out of 9,867 students in the Class of 2016, 8,353 students graduated with a regular diploma.
- The statewide graduation rate for the Class of 2016 was 84.66%. This is a slight increase from the Class of 2015, which had a graduation rate of 84.3%.
- The Class of 2016 graduation rate was 81.1% for African American students, 80.6% for Hispanic students and 87.6% for White students.
- The Class of 2016 graduation rate was 71.83% for English Learner students and 65.81% for Students with Disabilities.

Five-Year and Six-Year Adjusted Cohort

- The graduation rate for the Class of 2014 was 84.4% at the end of four years, 85.8% at the end of five years and 86.0% at the end of six years.
- For the Class of 2014, English Learner students and Students with Disabilities showed the greatest gains from their four-year graduation rate to their six-year graduation rate, going from 75.0% to 78.8% and 64.1% to 68.2%, respectively.

Table 1
Four-Year Graduation Rates by Student Group
Class of 2016

| Student Group | Students in Cohort | Graduates | Graduation Rate |
|----------------------------|--------------------|-----------|-----------------|
| All Students | 9,867 | 8,353 | 84.7% |
| African American | 3,217 | 2,608 | 81.1% |
| American Indian | 38 | 35 | 92.1% |
| Asian | 342 | 310 | 90.6% |
| English Learner | 387 | 278 | 71.8% |
| Hispanic | 1,206 | 972 | 80.6% |
| Low-Income | 3,027 | 2,282 | 75.4% |
| Multiracial | 152 | 126 | 82.9% |
| Students with Disabilities | 1,404 | 924 | 65.8% |
| White | 4,901 | 4,291 | 87.6% |

Figure 1
Four-Year Graduation Rates by Student Group
Class of 2013-2016

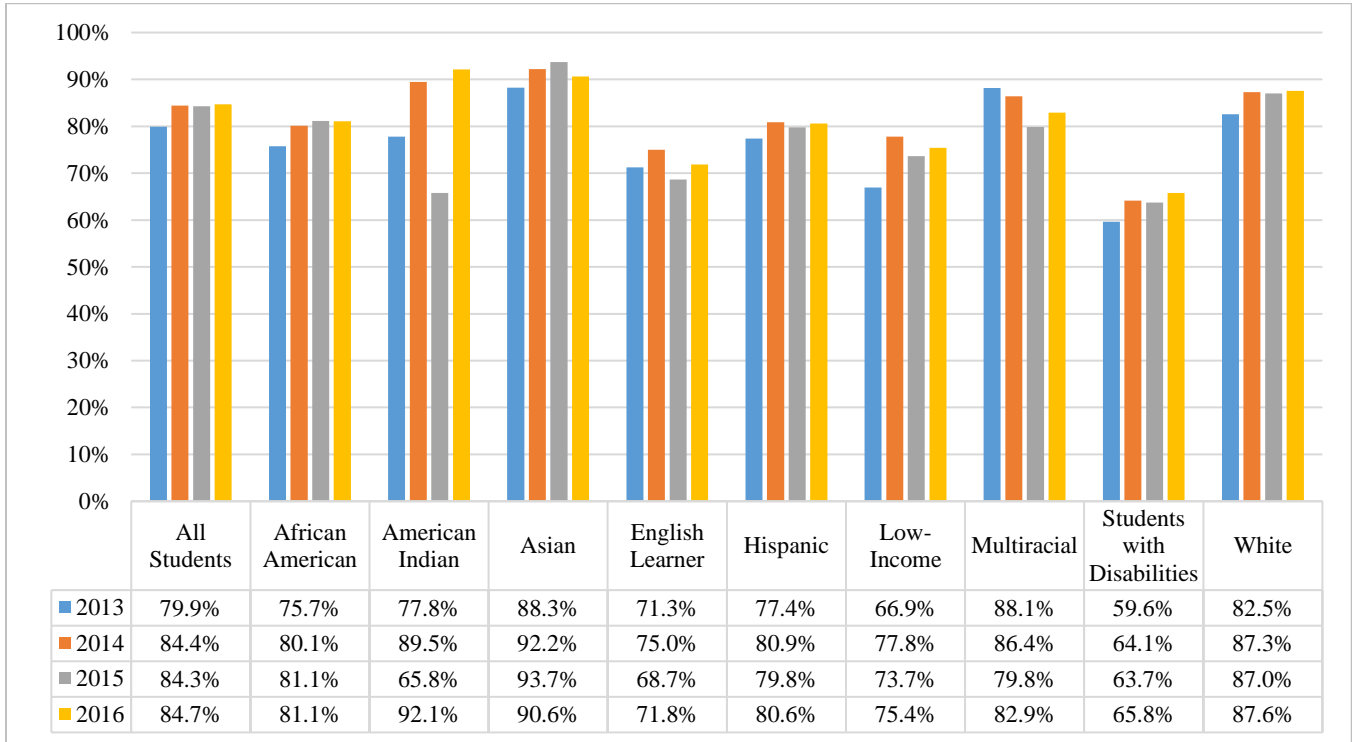
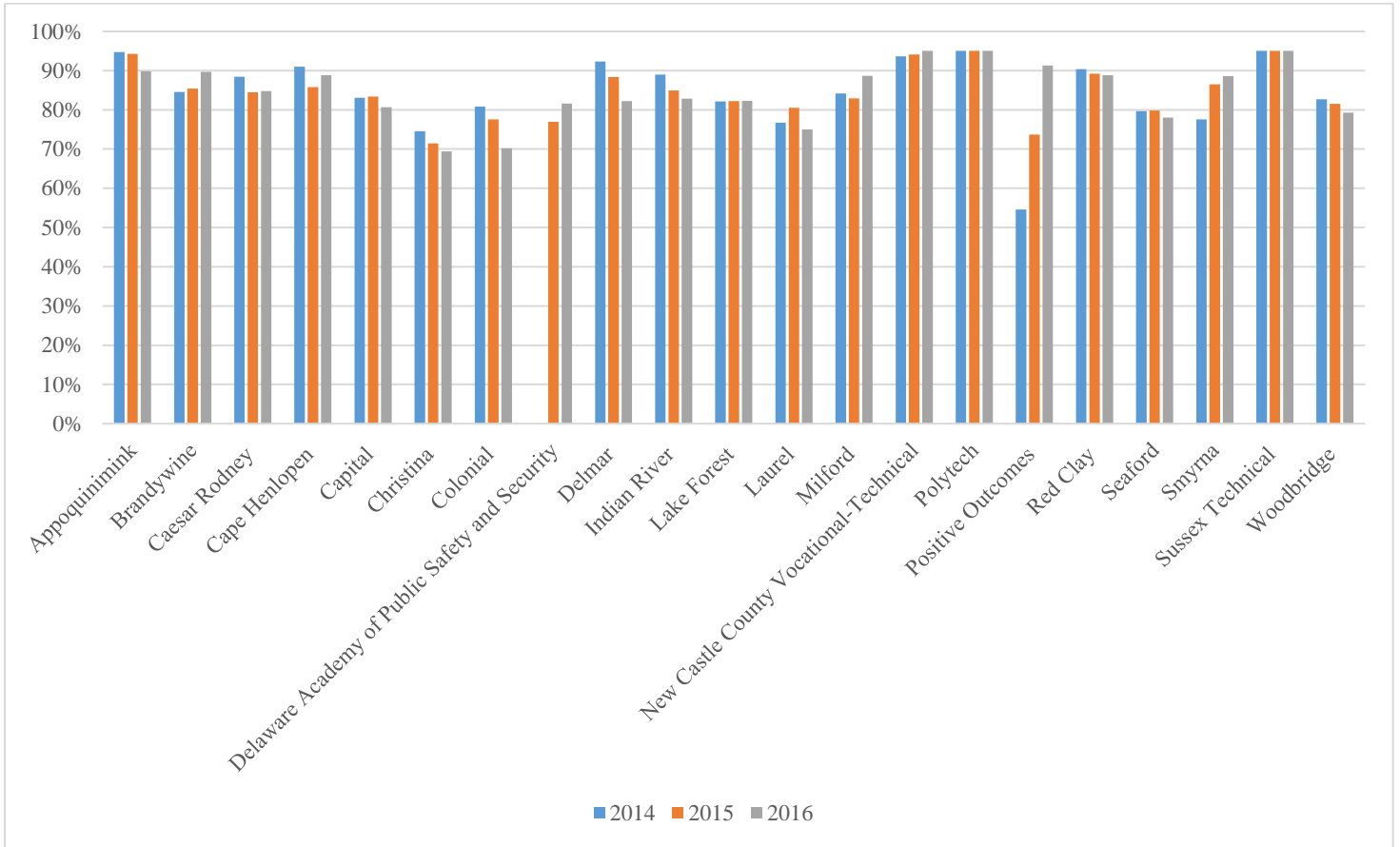


Table 2
Four-Year Graduation Rates by District/Charter
Class of 2014, 2015 and 2016

| District/Charter | 2014 | 2015 | 2016 |
|---|-------|-------|-------|
| Appoquinimink | 94.7% | 94.2% | 89.8% |
| Brandywine | 84.6% | 85.4% | 89.7% |
| Caesar Rodney | 88.5% | 84.5% | 84.8% |
| Cape Henlopen | 91.0% | 85.8% | 88.9% |
| Capital | 83.1% | 83.4% | 80.7% |
| Christina | 74.5% | 71.5% | 69.4% |
| Colonial | 80.8% | 77.6% | 70.2% |
| Delaware Academy of Public Safety and Security | --- | 76.9% | 81.6% |
| Delmar | 92.3% | 88.4% | 82.2% |
| Indian River | 89.0% | 84.9% | 82.9% |
| Lake Forest | 82.1% | 82.2% | 82.3% |
| Laurel | 76.7% | 80.5% | 75.0% |
| Milford | 84.2% | 83.0% | 88.7% |
| New Castle County Vocational-Technical | 93.6% | 94.1% | >95% |
| Polytech | >95% | >95% | >95% |
| Positive Outcomes | 54.6% | 73.7% | 91.3% |
| Red Clay (includes Charter School of Wilmington and Delaware Military Academy) | 90.3% | 89.3% | 88.8% |
| Seaford | 79.7% | 79.8% | 78.1% |
| Smyrna | 77.6% | 86.5% | 88.6% |
| Sussex Technical | >95% | >95% | >95% |
| Woodbridge | 82.7% | 81.6% | 79.3% |

*Note: Districts/Charters with 15 or less students are not included in the table above.
Graduation rates include all accountability schools within the LEA.*

Figure 2
Four-Year Graduation Rates by District/Charter
Class of 2014, 2015 and 2016



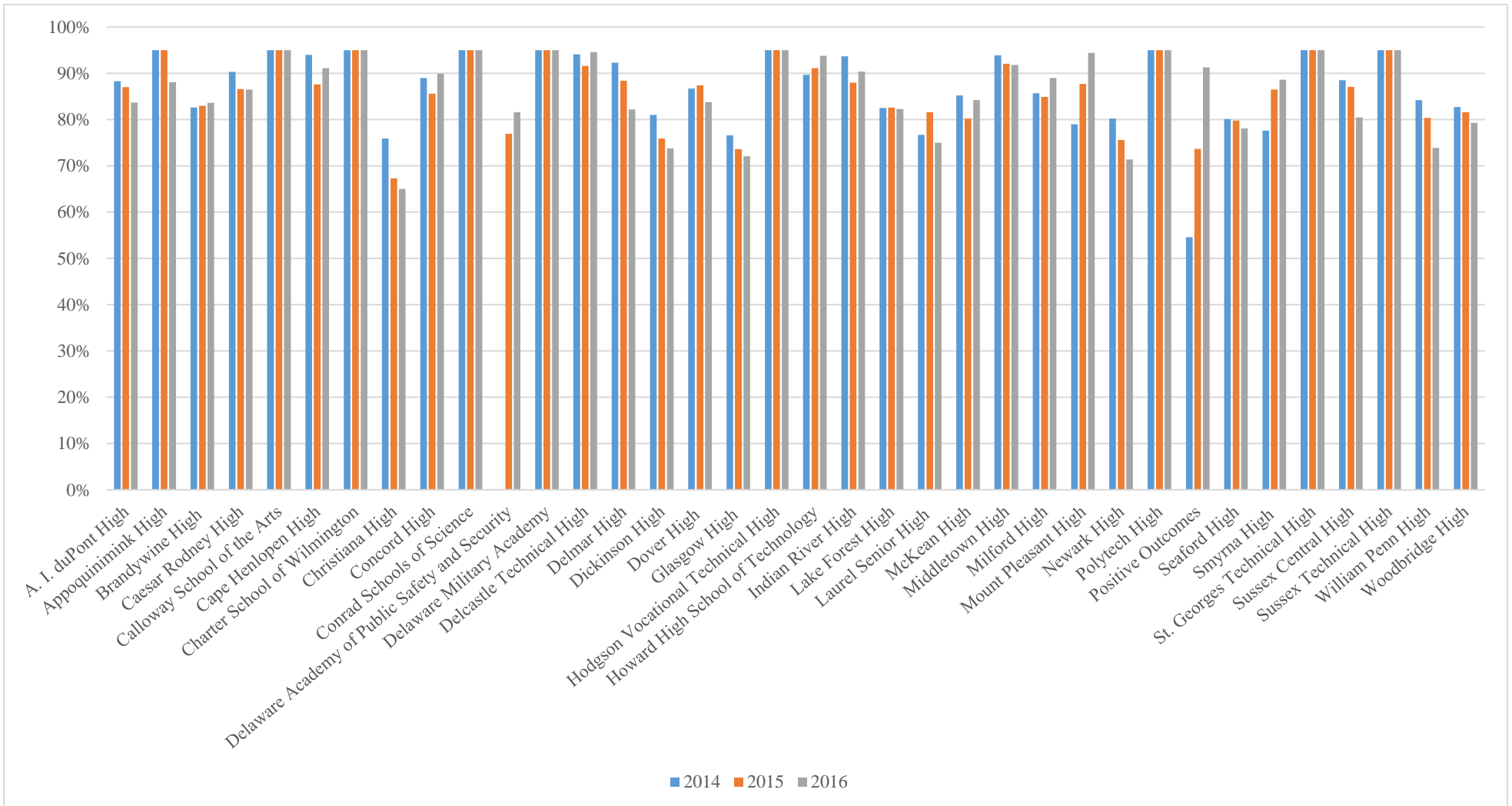
*Note: Districts/Charters with 15 or less students are not included in the figure above.
 Graduation rates include all accountability schools within the LEA.*

Table 3
Four-Year Graduation Rates by School
Class of 2014, 2015 and 2016

| School | 2014 | 2015 | 2016 |
|--|-------|-------|-------|
| A. I. duPont High | 88.3% | 87.0% | 83.7% |
| Appoquinimink High | >95% | >95% | 88.1% |
| Brandywine High | 82.6% | 83.0% | 83.6% |
| Caesar Rodney High | 90.3% | 86.6% | 86.5% |
| Calloway School of the Arts | >95% | >95% | >95% |
| Cape Henlopen High | 94.0% | 87.6% | 91.1% |
| Charter School of Wilmington | >95% | >95% | >95% |
| Christiana High | 75.9% | 67.3% | 65.0% |
| Concord High | 89.0% | 85.6% | 89.9% |
| Conrad Schools of Science | >95% | >95% | >95% |
| Delaware Academy of Public Safety and Security | --- | 76.9% | 81.6% |
| Delaware Military Academy | >95% | >95% | >95% |
| Delcastle Technical High | 94.1% | 91.6% | 94.6% |
| Delmar High | 92.3% | 88.4% | 82.2% |
| Dickinson High | 81.0% | 75.9% | 73.8% |
| Dover High | 86.7% | 87.4% | 83.8% |
| Glasgow High | 76.6% | 73.6% | 72.1% |
| Hodgson Vocational Technical High | >95% | >95% | >95% |
| Howard High School of Technology | 89.7% | 91.1% | 93.8% |
| Indian River High | 93.7% | 88.0% | 90.4% |
| Lake Forest High | 82.5% | 82.6% | 82.3% |
| Laurel Senior High | 76.7% | 81.6% | 75.0% |
| McKean High | 85.2% | 80.2% | 84.2% |
| Middletown High | 93.9% | 92.1% | 91.8% |
| Milford High | 85.7% | 84.9% | 89.0% |
| Mount Pleasant High | 79.0% | 87.7% | 94.4% |
| Newark High | 80.2% | 75.6% | 71.4% |
| Polytech High | >95% | >95% | >95% |
| Positive Outcomes | 54.6% | 73.7% | 91.3% |
| Seaford High | 80.1% | 79.8% | 78.1% |
| Smyrna High | 77.6% | 86.5% | 88.6% |
| St. Georges Technical High | >95% | >95% | >95% |
| Sussex Central High | 88.5% | 87.1% | 80.5% |
| Sussex Technical High | >95% | >95% | >95% |
| William Penn High | 84.2% | 80.4% | 73.9% |
| Woodbridge High | 82.7% | 81.6% | 79.3% |

Note: Schools with 15 or less students are not included in the table above.

Figure 3
Four-Year Graduation Rates by School
Class of 2014, 2015 and 2016



Note: Schools with 15 or less students are not included in the figure above.

Table 4
Four-Year Graduation Rates by School and Student Group
Class of 2016

| School | All Students | African American | American Indian | Asian | English Learners | Hispanic | Multiracial | Students with Disabilities | Low-Income | White |
|--|--------------|------------------|-----------------|-------|------------------|----------|-------------|----------------------------|------------|-------|
| A I duPont High | 83.7% | 73.3% | --- | 93.8% | 77.3% | 67.2% | >95% | 73.6% | 68.6% | >95% |
| Appoquinimink High | 88.1% | 84.2% | >95% | 82.4% | 83.3% | 83.3% | >95% | 61.5% | 70.2% | 90.3% |
| Brandywine High | 83.6% | 79.2% | --- | >95% | 88.9% | 75.0% | 71.4% | 67.9% | 73.0% | 89.2% |
| Caesar Rodney High | 86.5% | 86.3% | 75.0% | 82.4% | 68.8% | 82.4% | >95% | 70.4% | 72.0% | 87.2% |
| Calloway School of the Arts | >95% | >95% | --- | >95% | --- | >95% | --- | >95% | >95% | >95% |
| Cape Henlopen High | 91.1% | 86.7% | --- | >95% | 85.7% | 91.7% | 85.7% | 72.9% | 83.7% | 91.9% |
| Charter School of Wilmington | >95% | >95% | --- | >95% | --- | >95% | --- | --- | >95% | >95% |
| Christiana High | 65.0% | 68.8% | --- | 81.8% | 56.3% | 62.1% | 57.1% | 54.0% | 54.7% | 54.9% |
| Concord High | 89.9% | 82.9% | <5% | 88.9% | >95% | 70.0% | >95% | 68.4% | 72.3% | >95% |
| Conrad Schools of Science | >95% | >95% | --- | >95% | >95% | >95% | --- | >95% | >95% | >95% |
| Delaware Academy of Public Safety and Security | 81.6% | 77.4% | --- | >95% | >95% | >95% | --- | 76.9% | 71.0% | 79.6% |
| Delaware Military Academy | >95% | >95% | --- | >95% | >95% | >95% | >95% | >95% | >95% | >95% |
| Delcastle Technical High | 94.6% | >95% | <5% | 66.7% | 90.0% | >95% | >95% | 76.4% | 94.8% | 91.6% |
| Delmar High | 82.2% | 71.4% | >95% | >95% | >95% | 85.7% | 70.0% | 66.7% | 65.5% | 84.3% |
| Dickinson High | 73.8% | 73.6% | --- | >95% | 81.8% | 71.8% | 75.0% | 76.2% | 69.2% | 73.7% |
| Dover High | 83.8% | 84.7% | >95% | >95% | 90.9% | 71.1% | 80.0% | 76.4% | 77.4% | 83.9% |
| Glasgow High | 72.0% | 72.7% | --- | 88.9% | 80.0% | 68.3% | 50.0% | 41.5% | 63.9% | 71.4% |
| Hodgson Vocational Technical High | >95% | >95% | >95% | >95% | >95% | >95% | >95% | 92.0% | >95% | >95% |
| Howard High School of Technology | 93.8% | 92.9% | --- | >95% | >95% | 93.9% | >95% | 92.0% | 91.7% | >95% |
| Indian River High | 90.4% | >95% | --- | >95% | 66.7% | 86.4% | <5% | 88.6% | 85.2% | 90.8% |
| Lake Forest High | 82.3% | 89.1% | >95% | 50.0% | >95% | 92.3% | >95% | 77.1% | 71.2% | 79.4% |
| Laurel Senior High | 75.0% | 77.5% | >95% | --- | 62.5% | 62.5% | >95% | 62.5% | 70.3% | 74.3% |
| McKean High | 84.2% | 84.6% | --- | >95% | 83.3% | 82.1% | 75.0% | 75.8% | 80.2% | 86.3% |
| Middletown High | 91.8% | 92.7% | <5% | >95% | 88.9% | >95% | >95% | 65.1% | 71.4% | 89.5% |
| Milford High | 89.0% | 84.7% | 66.7% | 90.9% | 84.2% | 94.4% | 66.7% | 90.3% | 80.0% | 91.1% |
| Mount Pleasant High | 94.4% | 92.0% | >95% | >95% | 90.9% | >95% | >95% | 83.3% | 89.3% | >95% |
| Newark High | 71.4% | 62.4% | --- | 79.3% | 65.2% | 65.6% | >95% | 29.2% | 59.0% | 79.2% |
| Polytech High | >95% | >95% | >95% | >95% | >95% | 93.3% | >95% | 90.3% | 94.8% | >95% |
| Positive Outcomes | 91.3% | 85.7% | --- | --- | --- | --- | >95% | 86.7% | 87.5% | 93.3% |
| Seaford High | 78.1% | 73.2% | --- | 33.3% | 72.7% | 86.4% | 60.0% | 59.1% | 84.1% | 82.4% |
| Smyrna High | 88.6% | 86.1% | >95% | 91.7% | 83.3% | 90.9% | >95% | 75.5% | 76.2% | 89.6% |
| St. Georges Technical High | >95% | >95% | --- | >95% | >95% | >95% | >95% | >95% | >95% | >95% |
| Sussex Central High | 80.5% | 81.4% | >95% | >95% | 38.1% | 65.6% | 86.7% | 75.0% | 83.1% | 90.1% |
| Sussex Technical High | >95% | >95% | >95% | 90.9% | --- | >95% | >95% | 92.6% | 94.2% | >95% |
| William Penn High | 73.9% | 72.7% | >95% | >95% | 69.7% | 77.8% | 66.7% | 54.9% | 68.9% | 71.5% |
| Woodbridge High | 79.3% | 79.5% | --- | 66.7% | >95% | >95% | >95% | 64.3% | 73.0% | 76.6% |

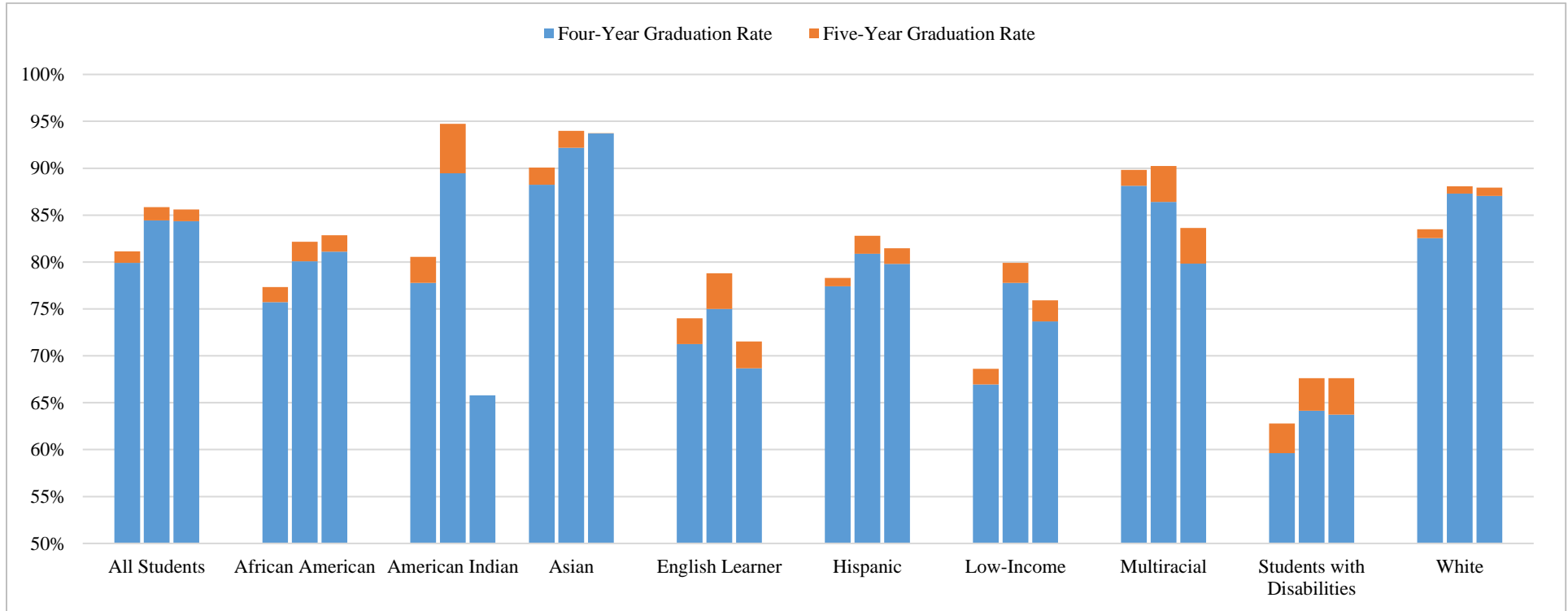
Note: Schools with 15 or less students are not included in the table above.

---denotes zero students.

Table 5
Four-Year and Five-Year Graduation Rates by Student Group
Class of 2015

| Student Group | Four-Year Graduates | Five-Year Graduates | Net Change in Graduates | Four-Year Graduation Rate | Five-Year Graduation Rate | Net Change in Graduation Rate |
|----------------------------|---------------------|---------------------|-------------------------|---------------------------|---------------------------|-------------------------------|
| All Students | 8,293 | 8,433 | 140 | 84.4% | 85.6% | 1.3% |
| African American | 2,628 | 2,691 | 63 | 81.1% | 82.9% | 1.7% |
| American Indian | 25 | 25 | - | 65.8% | 65.8% | 0.0% |
| Asian | 328 | 329 | 1 | 93.7% | 93.7% | 0.0% |
| English Learner | 252 | 264 | 12 | 68.7% | 71.5% | 2.9% |
| Hispanic | 889 | 910 | 21 | 79.8% | 81.5% | 1.7% |
| Low-Income | 2,055 | 2,124 | 69 | 73.7% | 75.9% | 2.3% |
| Multiracial | 87 | 92 | 5 | 79.8% | 83.6% | 3.8% |
| Students with Disabilities | 872 | 931 | 59 | 63.7% | 67.6% | 3.9% |
| White | 4,330 | 4,380 | 50 | 87.0% | 87.9% | 0.9% |

Figure 4
Four-Year and Five-Year Graduation Rates by Student Group
Class of 2015



| | All Students | | | African American | | | American Indian | | | Asian | | | English Learner | | | Hispanic | | | Low-Income | | | Multiracial | | | Students with Disabilities | | | White | | |
|----------------------|--------------|-------|-------|------------------|-------|-------|-----------------|-------|-------|-------|-------|-------|-----------------|-------|-------|----------|-------|-------|------------|-------|-------|-------------|-------|-------|----------------------------|-------|-------|-------|-------|-------|
| | 2013 | 2014 | 2015 | 2013 | 2014 | 2015 | 2013 | 2014 | 2015 | 2013 | 2014 | 2015 | 2013 | 2014 | 2015 | 2013 | 2014 | 2015 | 2013 | 2014 | 2015 | 2013 | 2014 | 2015 | 2013 | 2014 | 2015 | 2013 | 2014 | 2015 |
| Four-Year Graduation | 79.9% | 84.4% | 84.4% | 75.7% | 80.1% | 81.1% | 77.8% | 89.5% | 65.8% | 88.3% | 92.2% | 93.7% | 71.3% | 75.0% | 68.7% | 77.4% | 80.9% | 79.8% | 66.9% | 77.8% | 73.7% | 88.1% | 86.4% | 79.8% | 59.6% | 64.1% | 63.7% | 82.5% | 87.3% | 87.0% |
| Five-Year Graduation | 81.1% | 85.8% | 85.6% | 77.3% | 82.2% | 82.9% | 80.6% | 94.7% | 65.8% | 90.1% | 94.0% | 93.7% | 74.0% | 78.8% | 71.5% | 78.3% | 82.8% | 81.5% | 68.6% | 79.9% | 75.9% | 89.8% | 90.2% | 83.6% | 62.8% | 67.6% | 67.6% | 83.5% | 88.1% | 87.9% |

Table 6
Four-Year, Five-Year and Six-Year Graduation Rates by Student Group
Class of 2014

| Student Group | Four-Year Graduates | Five-Year Graduates | Six-Year Graduates | Net Change in Graduates Year 4 to Year 5 | Net Change in Graduates Year 5 to Year 6 | Four-Year Graduation Rate | Five-Year Graduation Rate | Six-Year Graduation Rate | Net Change in Graduation Rate Year 4 to Year 5 | Net Change in Graduation Rate Year 5 to Year 6 |
|----------------------------|---------------------|---------------------|--------------------|--|--|---------------------------|---------------------------|--------------------------|--|--|
| All Students | 8,202 | 8,351 | 8,363 | 149 | 12 | 84.4% | 85.8% | 86.0% | 1.4% | 0.1% |
| African American | 2,486 | 2,556 | 2,563 | 70 | 7 | 80.1% | 82.2% | 82.4% | 2.1% | 0.2% |
| American Indian | 34 | 36 | 36 | 2 | - | 89.5% | 94.7% | 94.7% | 5.3% | 0.0% |
| Asian | 306 | 313 | 313 | 7 | - | 92.2% | 94.0% | 94.0% | 1.8% | 0.0% |
| English Learner | 246 | 260 | 260 | 14 | - | 75.0% | 78.8% | 78.8% | 3.8% | 0.0% |
| Hispanic | 855 | 876 | 876 | 21 | - | 80.9% | 82.8% | 82.8% | 1.9% | 0.0% |
| Low-Income | 3,634 | 3,743 | 3,749 | 109 | 6 | 77.8% | 79.9% | 80.0% | 2.1% | 0.1% |
| Multiracial | 70 | 74 | 74 | 4 | - | 86.4% | 90.2% | 90.2% | 3.8% | 0.0% |
| Students with Disabilities | 839 | 888 | 895 | 49 | 7 | 64.1% | 67.6% | 68.2% | 3.5% | 0.5% |
| White | 4,447 | 4,491 | 4,496 | 44 | 5 | 87.3% | 88.1% | 88.2% | 0.8% | 0.1% |

Figure 5
Four-Year, Five-Year and Six-Year Graduation Rates by Student Group
Class of 2012, 2013 and 2014



| | All Students | | | African American | | | American Indian | | | Asian | | | English Learner | | | Hispanic | | | Low-Income | | | Multiracial | | | Students with Disabilities | | | White | | |
|----------------------|--------------|-------|-------|------------------|-------|-------|-----------------|-------|-------|-------|-------|-------|-----------------|-------|-------|----------|-------|-------|------------|-------|-------|-------------|-------|-------|----------------------------|-------|-------|-------|-------|-------|
| | 2012 | 2013 | 2014 | 2012 | 2013 | 2014 | 2012 | 2013 | 2014 | 2012 | 2013 | 2014 | 2012 | 2013 | 2014 | 2012 | 2013 | 2014 | 2012 | 2013 | 2014 | 2012 | 2013 | 2014 | 2012 | 2013 | 2014 | 2012 | 2013 | 2014 |
| Four-Year Graduation | 79.6% | 79.9% | 84.4% | 74.0% | 75.7% | 80.1% | 72.3% | 77.8% | 89.5% | 93.6% | 88.3% | 92.2% | 71.5% | 71.3% | 75.0% | 74.4% | 77.4% | 80.9% | 65.0% | 66.9% | 77.8% | 87.3% | 88.1% | 86.4% | 56.8% | 59.6% | 64.1% | 83.0% | 82.5% | 87.3% |
| Five-Year Graduation | 81.1% | 81.1% | 85.8% | 75.9% | 77.3% | 82.2% | 72.7% | 80.6% | 94.7% | 93.9% | 90.1% | 94.0% | 72.8% | 74.0% | 78.8% | 76.8% | 78.3% | 82.8% | 65.7% | 68.6% | 79.9% | 89.4% | 89.8% | 90.2% | 60.5% | 62.8% | 67.6% | 84.2% | 83.5% | 88.1% |
| Six-Year Graduation | 81.3% | 81.4% | 86.0% | 76.1% | 77.6% | 82.4% | 72.7% | 80.6% | 94.7% | 93.9% | 90.1% | 94.0% | 73.2% | 74.9% | 78.8% | 76.9% | 78.8% | 82.8% | 66.0% | 69.1% | 80.0% | 90.9% | 91.5% | 90.2% | 61.3% | 63.8% | 68.2% | 84.4% | 83.7% | 88.2% |

Appendix A

Graduation Definitions:

- ESEA Four-Year Adjusted Graduation Rate: number of students who graduate in four years with a regular high school diploma divided by the number of students who form the adjusted cohort for the graduating class.
- Cohort adjustment: The cohort is “adjusted” by adding any students transferring into the cohort and by subtracting any students who transfer out, emigrate to another country, or die during the years covered by that cohort’s rate calculation.
- Transfer into: A transfer into a cohort occurs when a student enrolls after the beginning of the entering cohort’s first year in high school, up to and including in grade 12. A transfer in may be from another public school in Delaware, a nonpublic school in Delaware or a student transferring in from another state or country.
- Transfer out: A transfer out of a cohort occurs when a student leaves a Delaware public school and enrolls in another public or nonpublic school within Delaware or out of state or in an educational program that culminates in the award of a regular high school diploma. Transfers out must have appropriate documentation; otherwise the student shall be considered a drop out.
- Regular High School Diploma: the standard high school diploma awarded to students that is fully aligned with the state’s academic content standards and does not include a GED credential, certificate of attendance, or any alternative award.