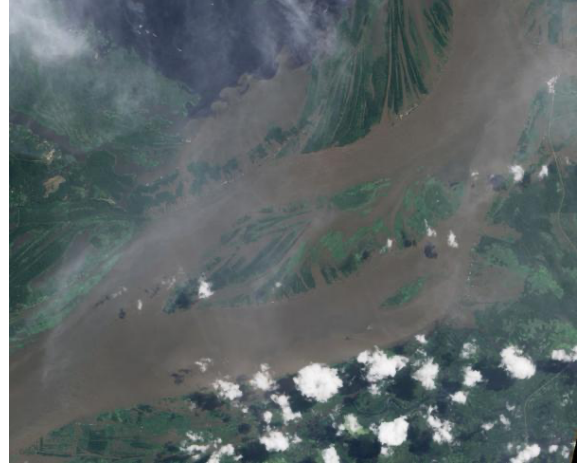


Humans Interact with the Environment  
Check for Understanding



Photos of earth taken from space clearly show the Arabian Peninsula and North Africa. But they seldom allow a good view of the Amazon Basin - it is usually covered with clouds.

Why might photographers have a better view of the deserts than the rainforests? Use the concept of cycles to explain your answer.

---

---

---

---

---

---

---

---

---

---